

Directions for Accessing SuccessMaker at Home

In order to access SuccessMaker online, you will need to have one of the following compatible browsers, update Java, and Adobe Flash Player. See image below:

Client Stations
Operating systems are based on a supported Web Browser, Java Runtime Environment, and Adobe Flash Player version combination.
Web Browsers: <ul style="list-style-type: none">• Internet Explorer 9, 10, or 11 * (32/64-bit)• Safari 6 or 7 (32/64-bit)• Firefox (32-bit Windows (64-bit Mac OS X)• Chrome (32-bit Windows) not supported with MAC OS X * For IE, only the desktop version is supported and not the metro version.
Java Runtime Environment (JRE): <ul style="list-style-type: none">• Windows = JRE 1.7u40 - 1.8u25 (32/64-bit) *• Mac = JRE 1.7u40-1.8u25 (64-bit) * Review the latest Java version recommendations in Knowledge Base article 3991 . * Java version 1.7.0_71 is not supported.
Adobe Flash Player: <ul style="list-style-type: none">• Flash 12 - 15 (32/64-bit)

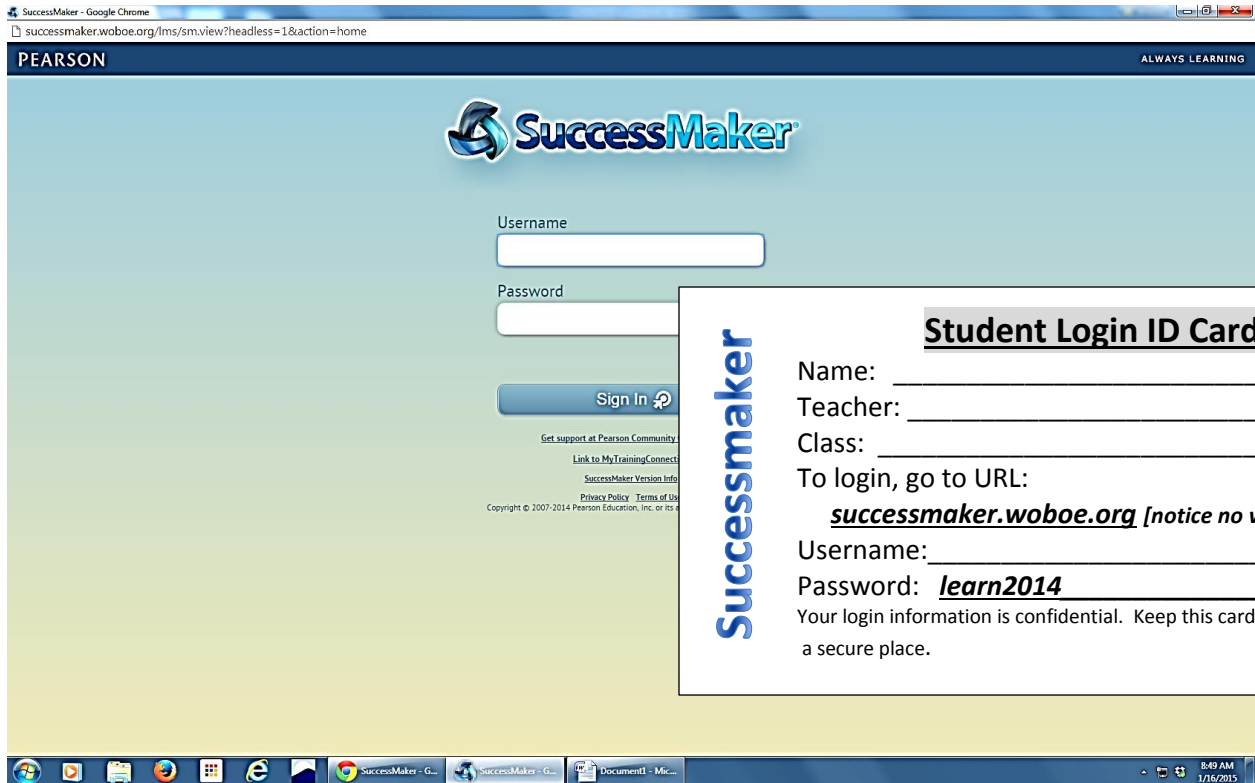
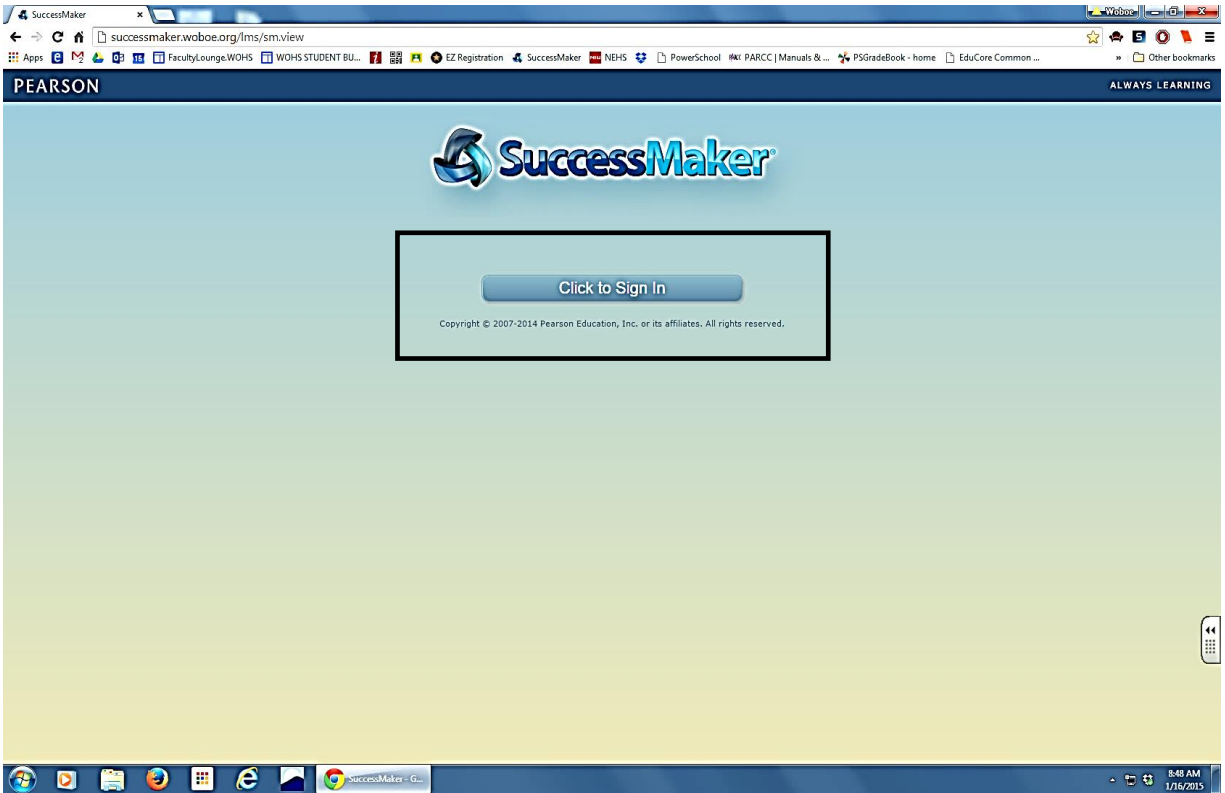
STEPS

Access by launching your browser and go to URL:

successmaker.woboe.org

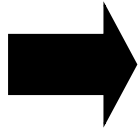
[please **do NOT type www.successmaker.woboe.org** or you will not access this program successfully]





- A. USERNAME: child will type school issued USERNAME (sent to you by teacher)
- B. Type in the PASSWORD (sent to you by teacher)

IMPORTANT:



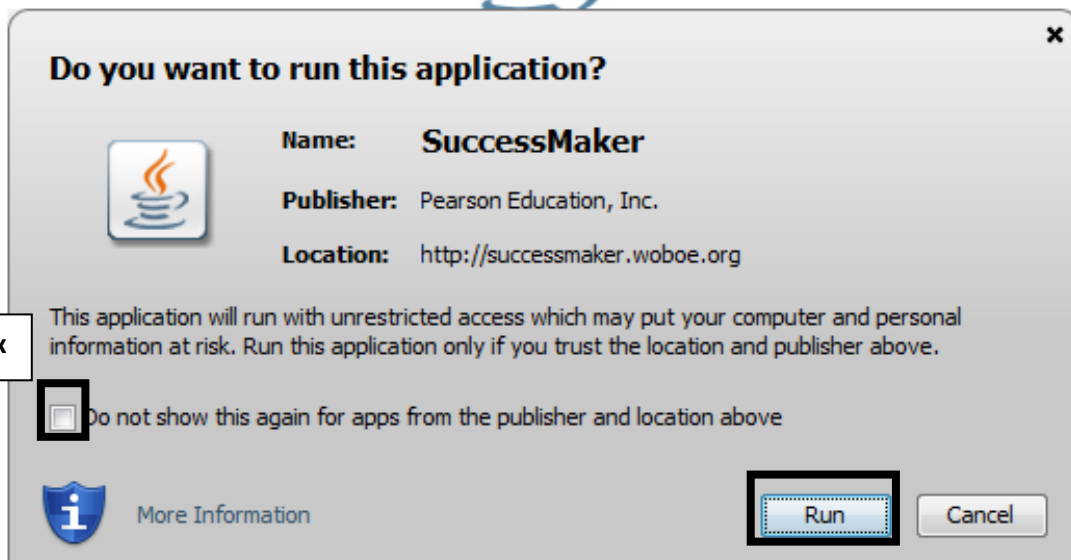
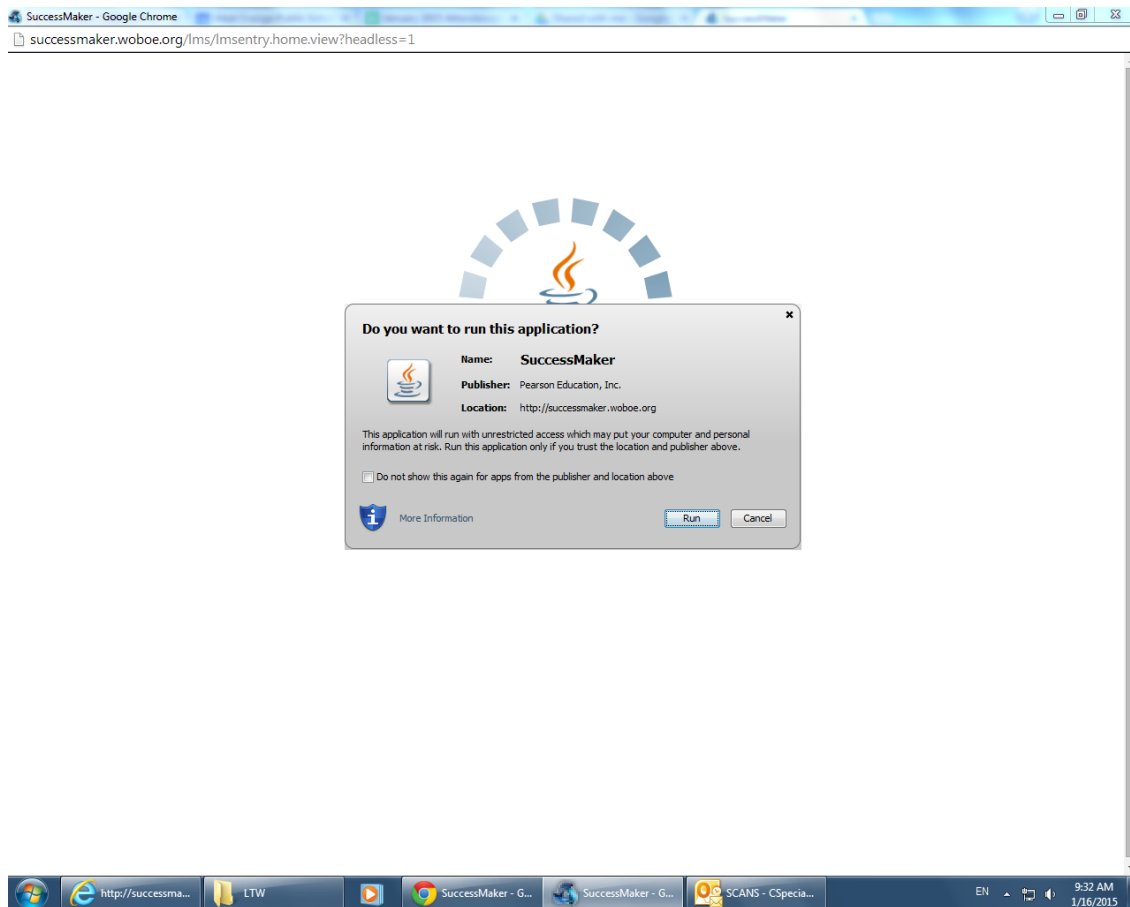
All passwords are **CASE SENSITIVE**: make sure you type the password in **lowercase** and that your **CAP LOCK** is **OFF**; type your **child's username** (usually a number) accurately or you will have **trouble logging on**



C. Click SIGN IN

YOUR CHILD HAS BEEN DOING THIS AT SCHOOL AND SHOULD BE FAMILIAR WITH THIS PROCESS.

The time you log on to the SuccessMaker website, you will see this screen:

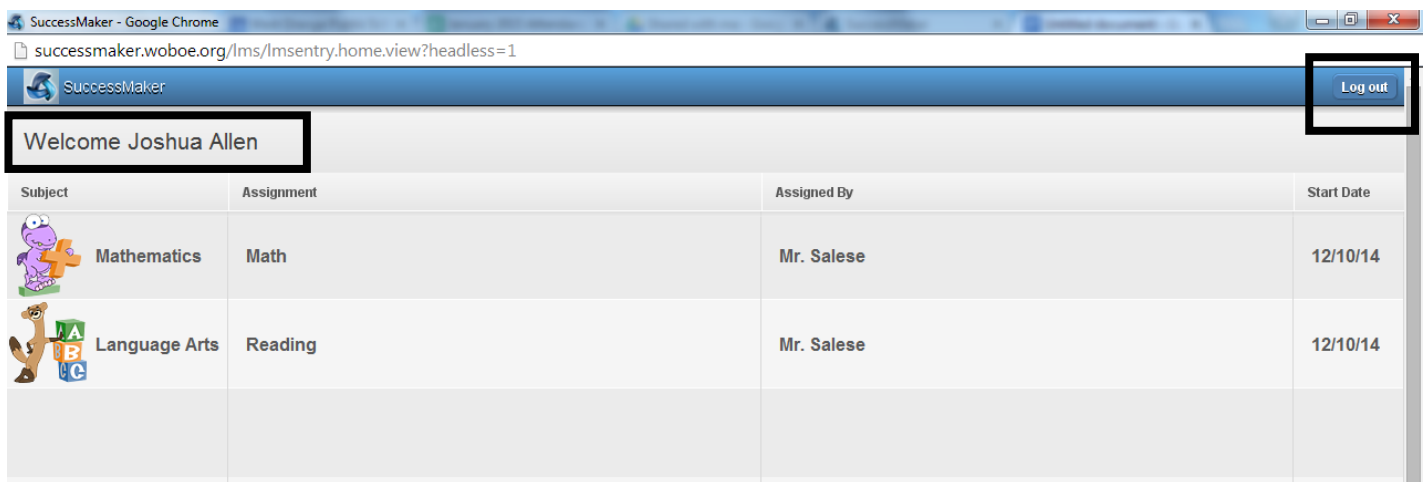


You will only have to do this the first time you access Successmaker. Successmaker 7.0 requires JAVA 8.25 in order to run. *This is why Successmaker does not work on iPads or tablets. If you notice your child's screens are freezing, you probably need to update your version of JAVA on your personal computer or laptop.*

***** PLEASE BE SURE YOU SEE YOUR CHILD'S NAME AT THE WELCOME SCREEN**

If the Welcome screen does **not** say your child's name at the top left corner, please Log Out (upper right hand corner) and re-enter student number (USERNAME) again very carefully. There was probably a keystroke error.

The program has separate Math and Reading components. It should be individualized for YOUR CHILD. The program picks up wherever they left off when they were last on.



Students should never stay on a single session longer than as follows:

15 minutes for Math

20 minutes for Reading

Your child should work and answer on their own, at their own pace with no assistance on content from parents. They have been using the program in school and they should be familiar with the icons and navigation conventions of the program.

Please direct any questions to your teacher.