

**PARCC RESULTS:
SPRING 2015 AND SPRING 2016
ADMINISTRATIONS**

**WEST ORANGE SCHOOL DISTRICT
OCTOBER 2016**

Measuring
College and
Career
Readiness

NEW JERSEY'S STATEWIDE ASSESSMENT PROGRAM

- 2016 marks the 2nd administration of the Partnership for Assessment of Readiness for College and Careers (PARCC) and the first opportunity to compare year-to-year results as the following slides will show.
- Students took PARCC English Language Arts and Literacy Assessments (ELA/L) in grades 3 – 11.
- Students took PARCC Mathematics Assessments in grades 3 – 8 and End of Course Assessments in Algebra I, Geometry, and Algebra II.

PARCC PERFORMANCE LEVELS

- **Level 1: Not yet meeting grade-level expectations**
- **Level 2: Partially meeting grade-level expectations**
- **Level 3: Approaching grade-level expectations**
- **Level 4: Meeting grade-level expectations**
- **Level 5: Exceeding grade-level expectations**

PARCC PERFORMANCE LEVELS

PARCC Performance Levels for ELA and Math				
Level 1	Level 2	Level 3	Level 4	Level 5
Did Not Yet Meet Expectations 650-699	Partially Met Expectations 700-724	Approached Expectations 725-749	Met Expectations 750-798	Exceeded Expectations 799-850

Reading Score Range	Writing Score Range
10 - 90	10 - 60

GRADUATION REQUIREMENTS FOR 2016, 2017, 2018 AND 2019

English Language Arts/Literacy

- PARCC ELA Grade 9 ≥ 750 (Level 4) or
- PARCC ELA Grade 10 ≥ 750 (Level 4) or
- PARCC ELA Grade 11 ≥ 725 (Level 3) or
- SAT Reading* ≥ 400 or
- ACT Reading or ACT PLAN Reading ≥ 16 or
- PSAT10 Reading or PSAT-NMSQT Reading (Test taken prior to October 2015) ≥ 40 or
- PSAT10 Reading or PSAT-NMSQT Reading (Test taken October 2015 or after) ≥ 22 or
- ACT Aspire Reading ≥ 422 or
- ASVAB-AFQT Composite ≥ 31 or
- Accuplacer Write Placer ≥ 6 or
- Meet the Criteria of the NJDOE Portfolio Appeal

Mathematics

- PARCC Algebra 1 ≥ 750 (Level 4) or
- PARCC Geometry ≥ 725 (Level 3) or
- PARCC Algebra 2 ≥ 725 (Level 3) or
- SAT Math* ≥ 400 or
- ACT or ACT PLAN Math ≥ 16 or
- PSAT10 Math or PSAT/NMSQT Math (Test taken prior to October 2015) ≥ 40 or
- PSAT10 Math or PSAT/NMSQT Math (Test taken October 2015 or after) ≥ 22 or
- ACT Aspire Math ≥ 422 or
- ASVAB-AFQT ≥ 31 or
- Accuplacer Elementary Algebra ≥ 76 or
- Meet the Criteria of the NJDOE Portfolio Appeal

Note: *SAT taken prior to March 2016; The College Board will establish new “cut scores” in May 2016 for the new SAT.

Class of 2021 (current 8th grade) and Beyond

ENGLISH LANGUAGE ARTS (ELA)

(Must Take) PARCC ELA Grade 9

and

(Must Take and Pass) PARCC ELA Grade 10

and

(Must Take) PARCC ELA Grade 11

*If passing score is not met on PARCC ELA Grade 10,
then the student must meet the
Criteria of the NJDOE Portfolio Appeal*

MATHEMATICS

(Must Take and Pass) PARCC Algebra I

and

(Must Take) PARCC Geometry

and

(Must Take) PARCC Algebra II

*If passing score is not met on PARCC Algebra 1,
then the student must meet the
Criteria of the NJDOE Portfolio Appeal*



HOW DID WEST ORANGE STUDENTS
PERFORM ON PARCC ASSESSMENTS
COMPARED WITH THE PARCC CONSORTIUM
AND NEW JERSEY IN 2016?

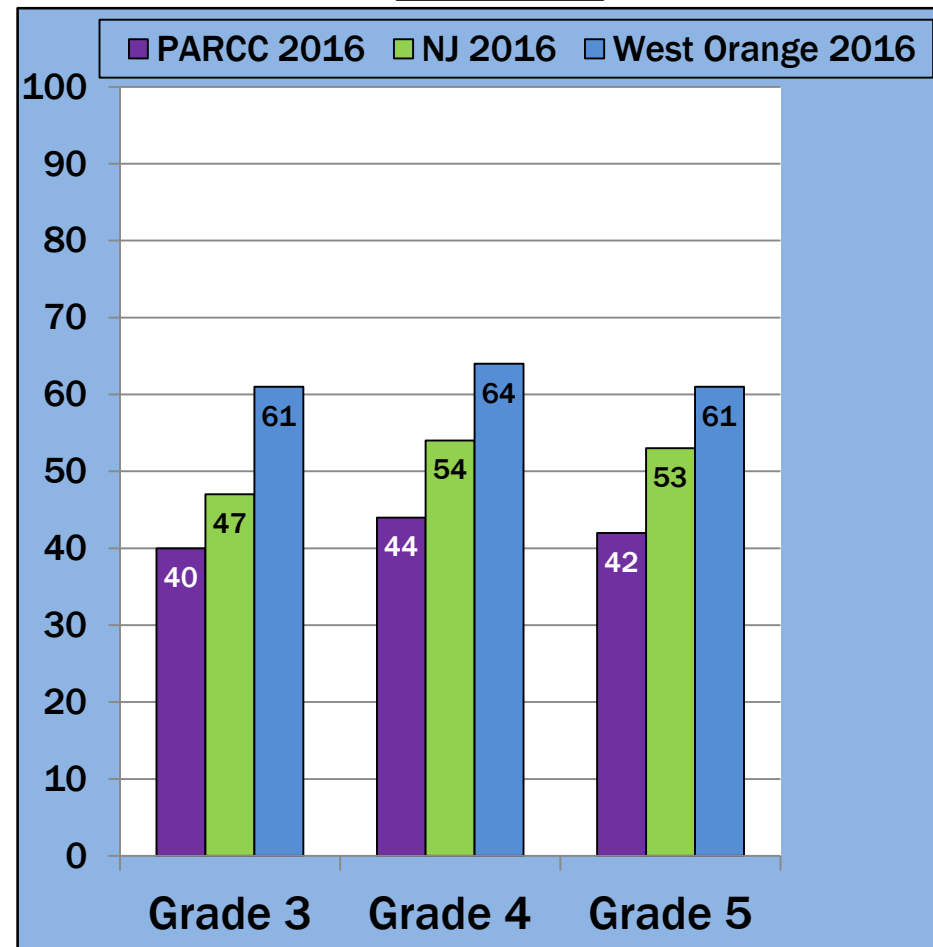
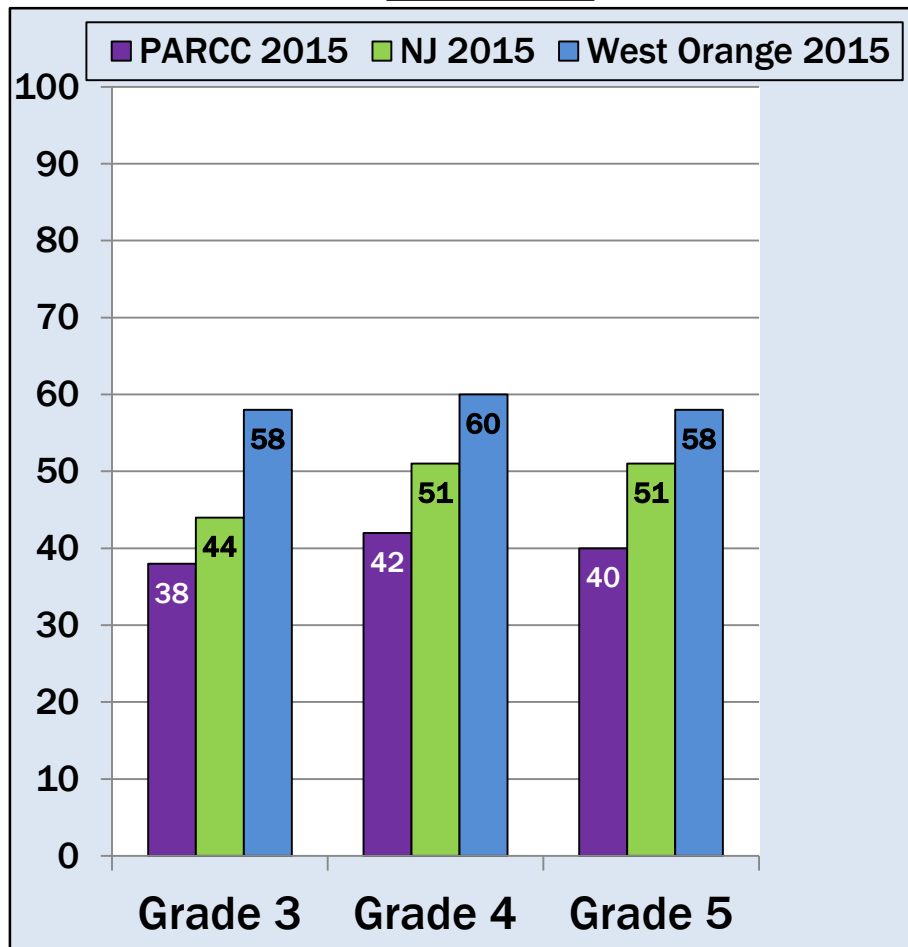
PERCENT OF STUDENTS PASSING IN 2015 & 2016

(MET OR EXCEEDED EXPECTATIONS LEVELS)

ELA PARCC GRADES 3 - 5

2015

2016



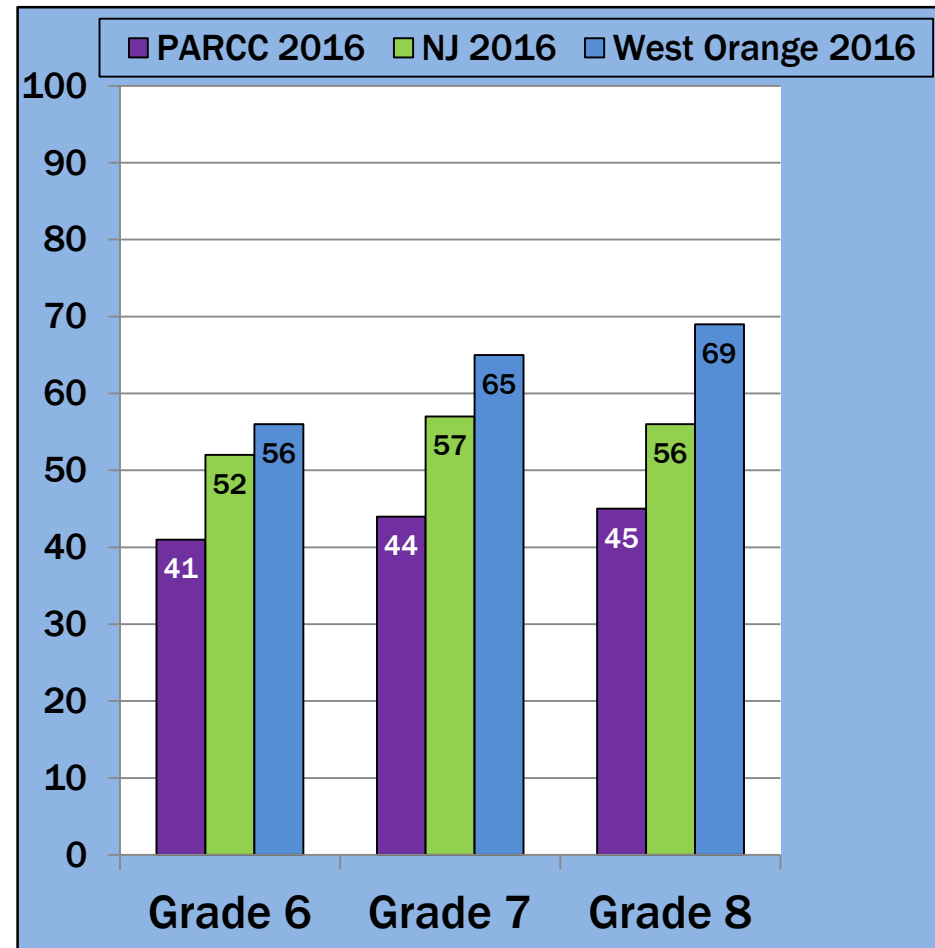
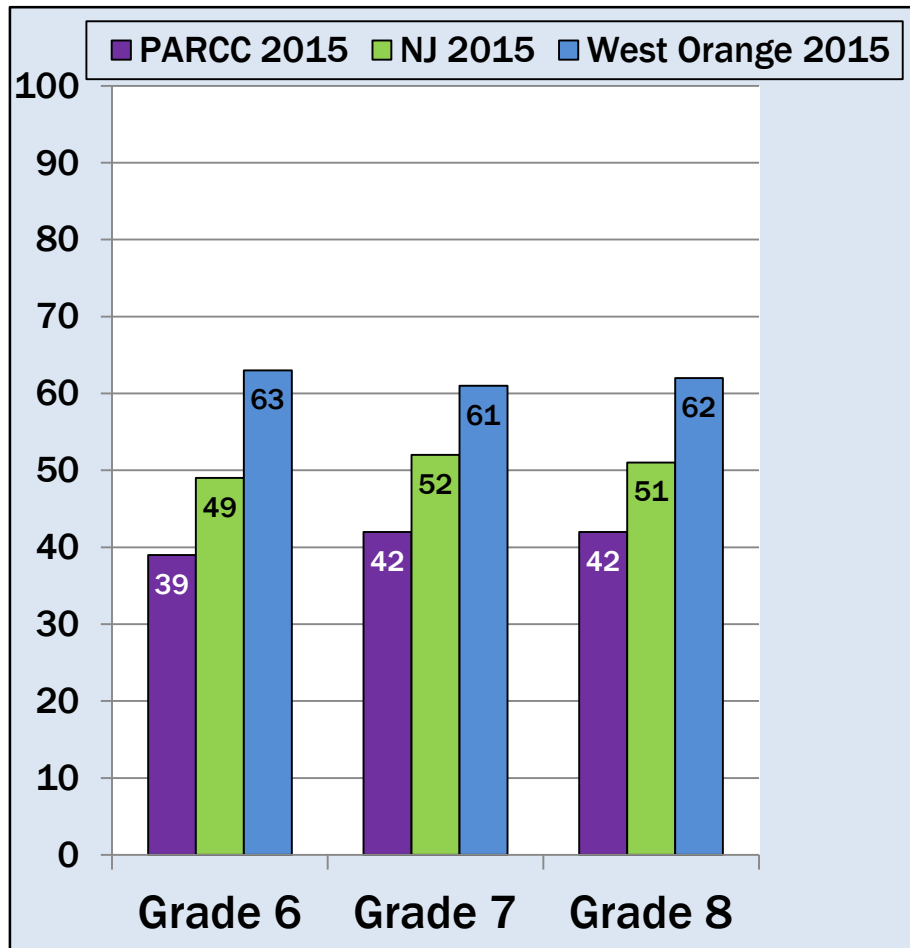
PERCENT OF STUDENTS PASSING IN 2015 & 2016

(MET OR EXCEEDED EXPECTATIONS LEVELS)

ELA PARCC GRADES 6 - 8

2015

2016



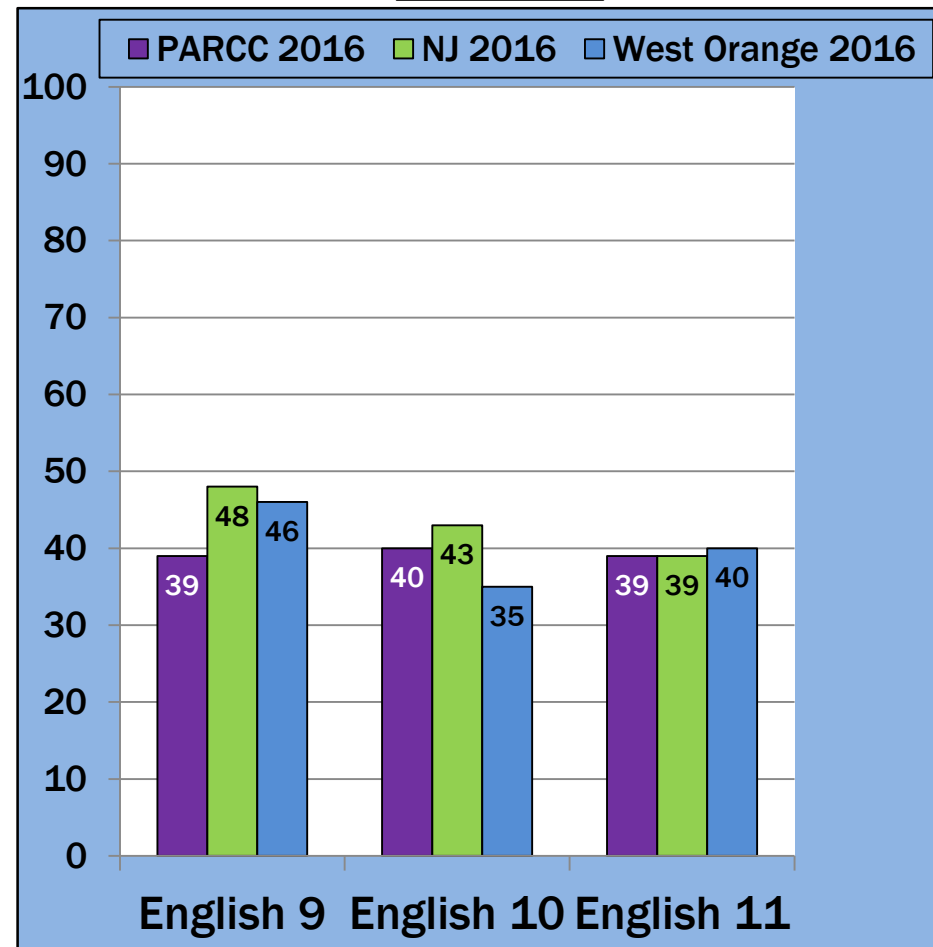
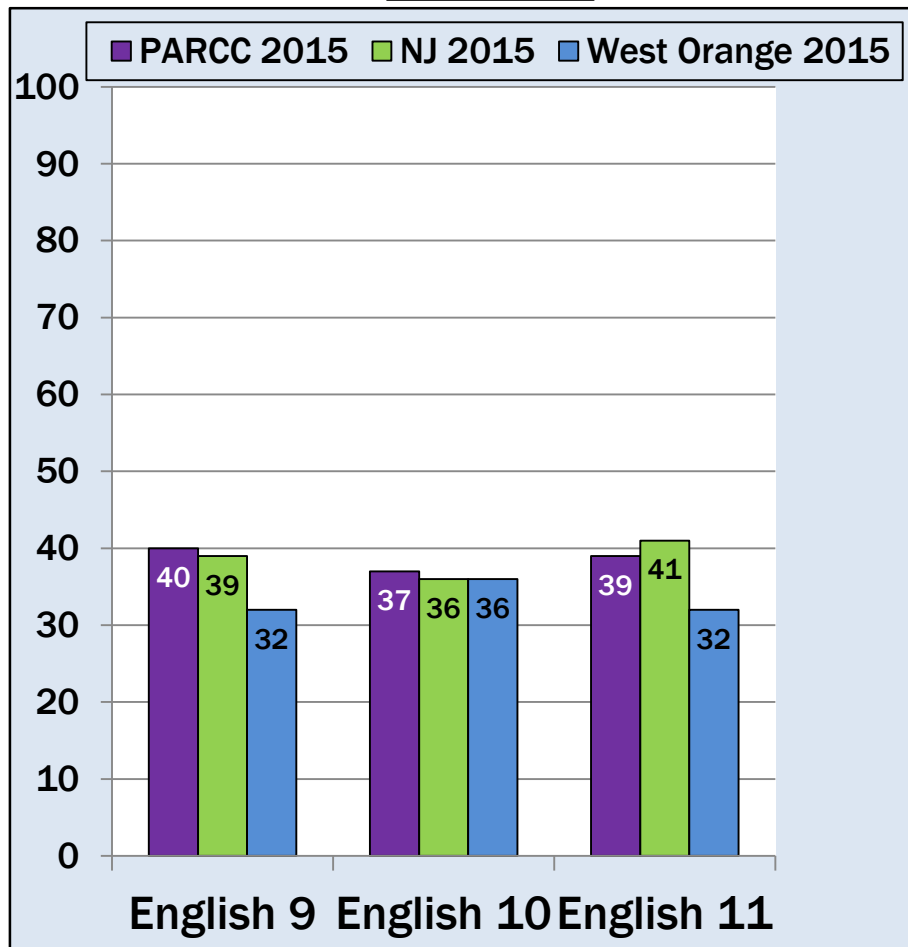
PERCENT OF STUDENTS PASSING IN 2015 & 2016

(MET OR EXCEEDED EXPECTATIONS LEVELS)

ELA PARCC GRADES 9 - 12

2015

2016



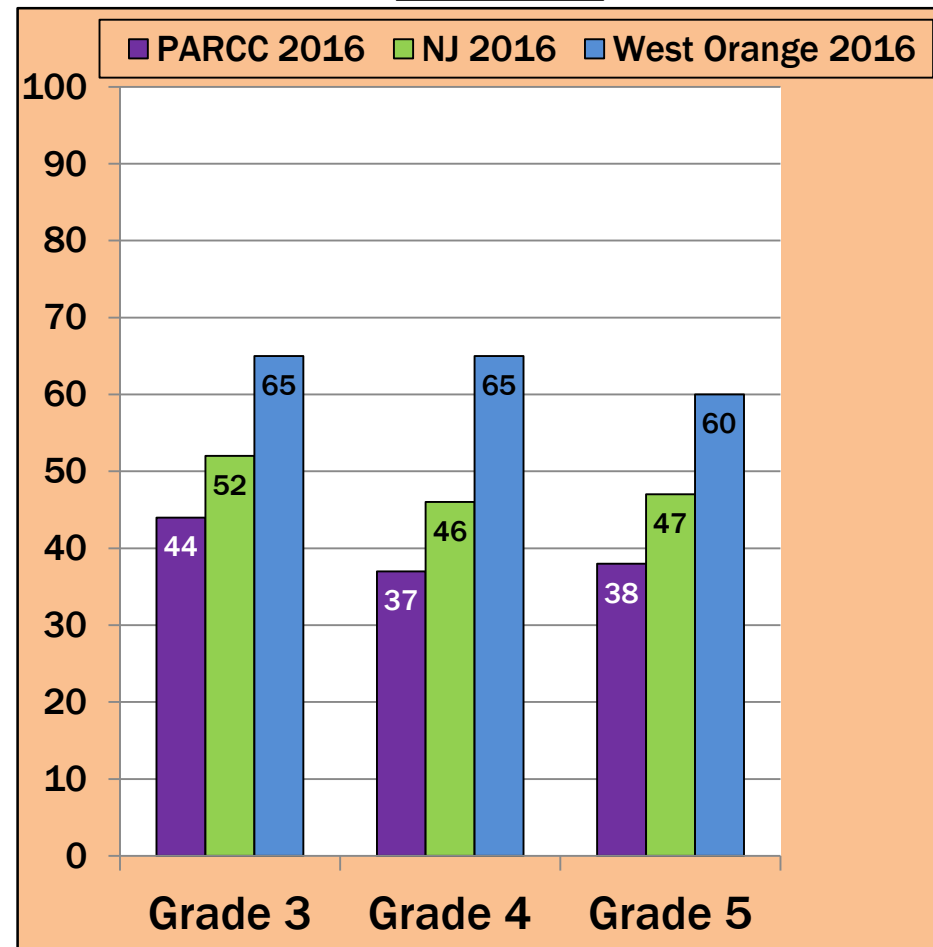
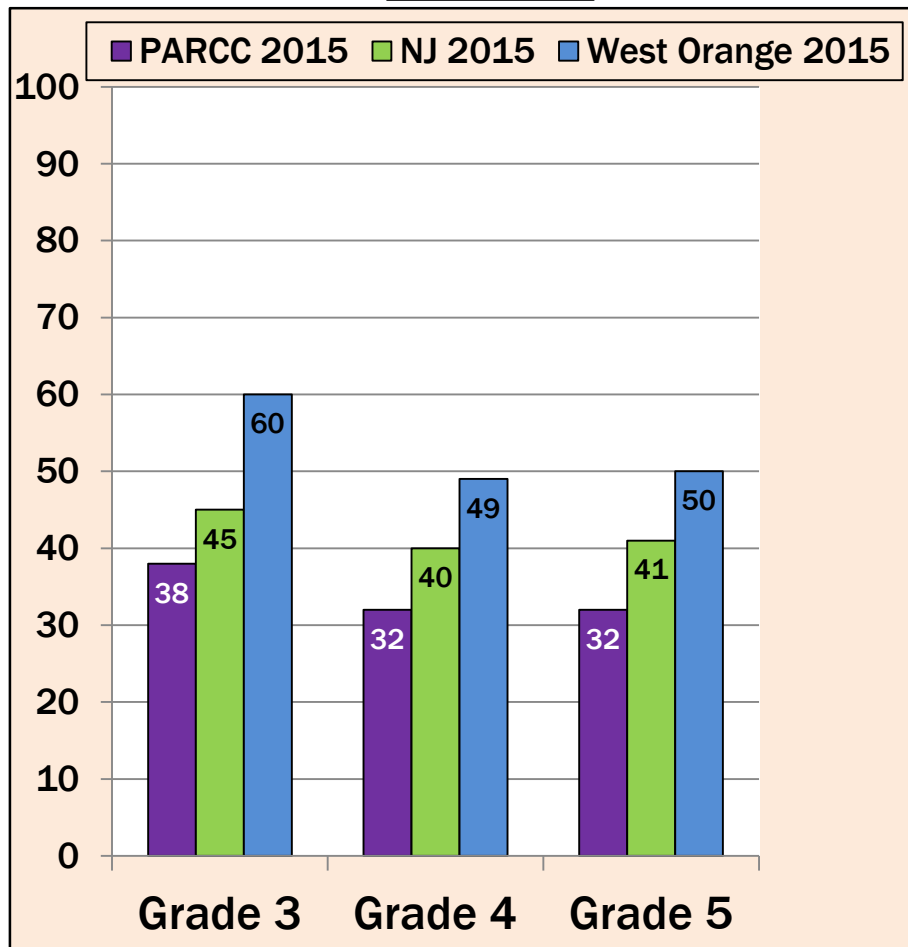
PERCENT OF STUDENTS PASSING IN 2015 & 2016

(MET OR EXCEEDED EXPECTATIONS LEVELS)

MATHEMATICS PARCC GRADES 3 - 5

2015

2016



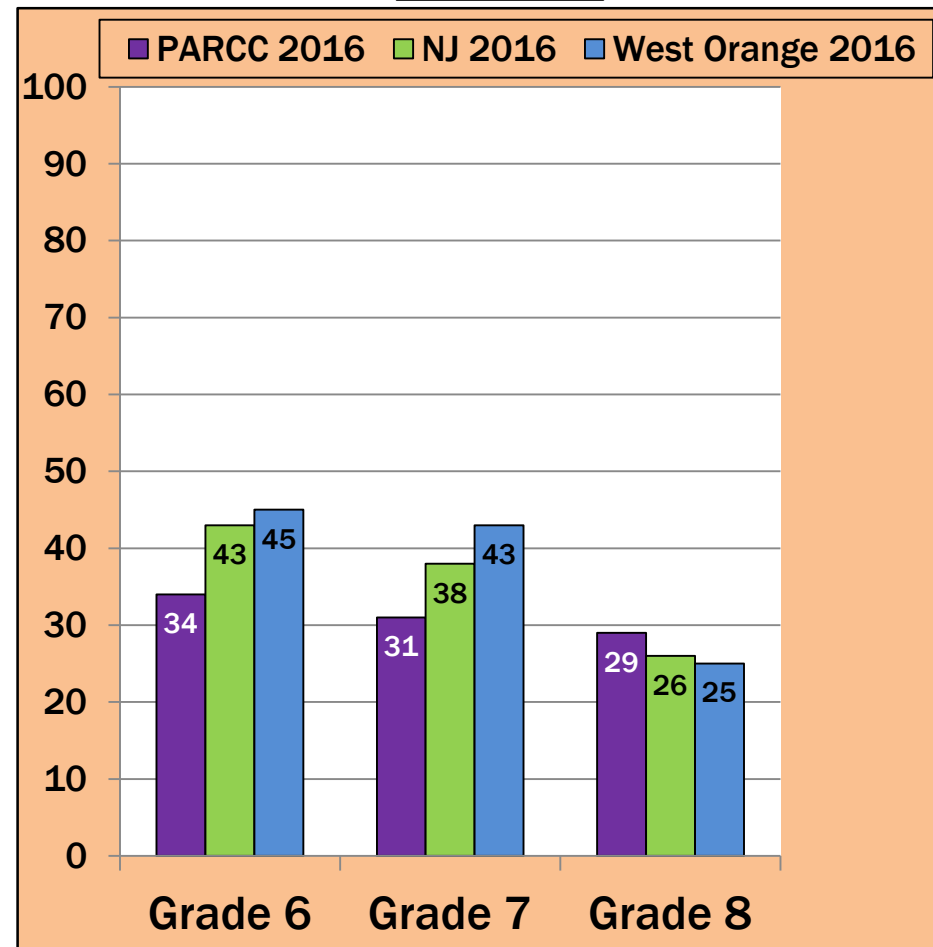
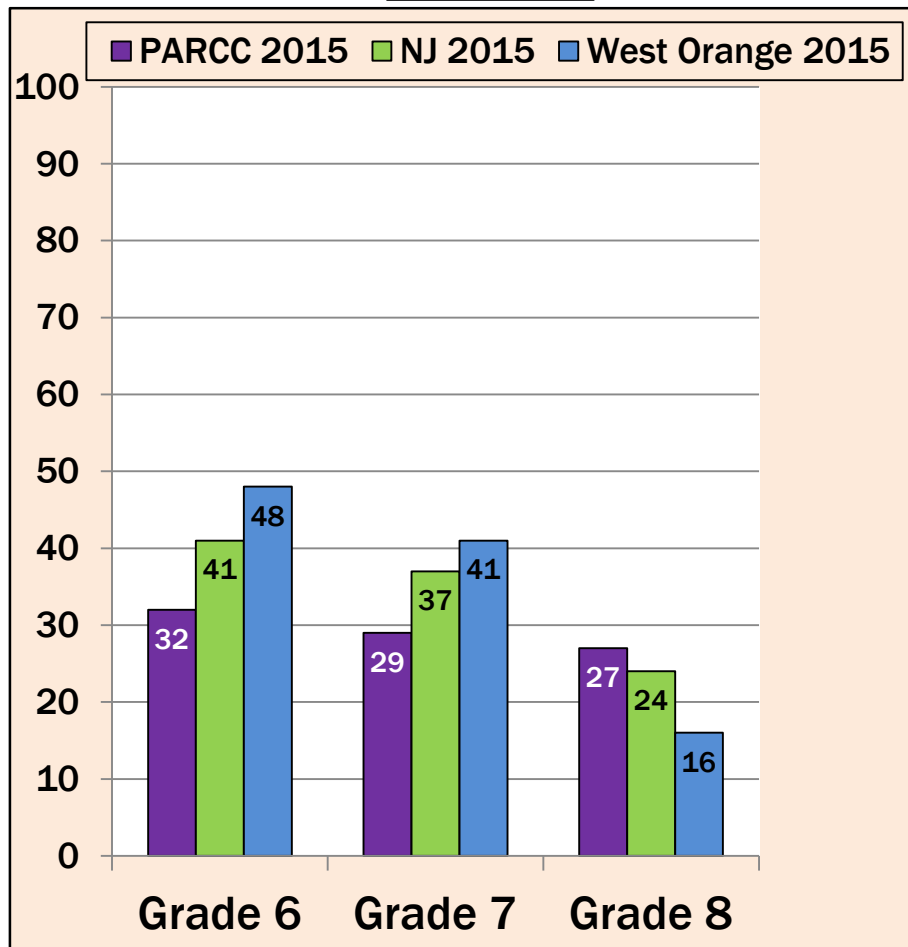
PERCENT OF STUDENTS PASSING IN 2015 & 2016

(MET OR EXCEEDED EXPECTATIONS LEVELS)

MATHEMATICS PARCC GRADES 6 - 8

2015

2016



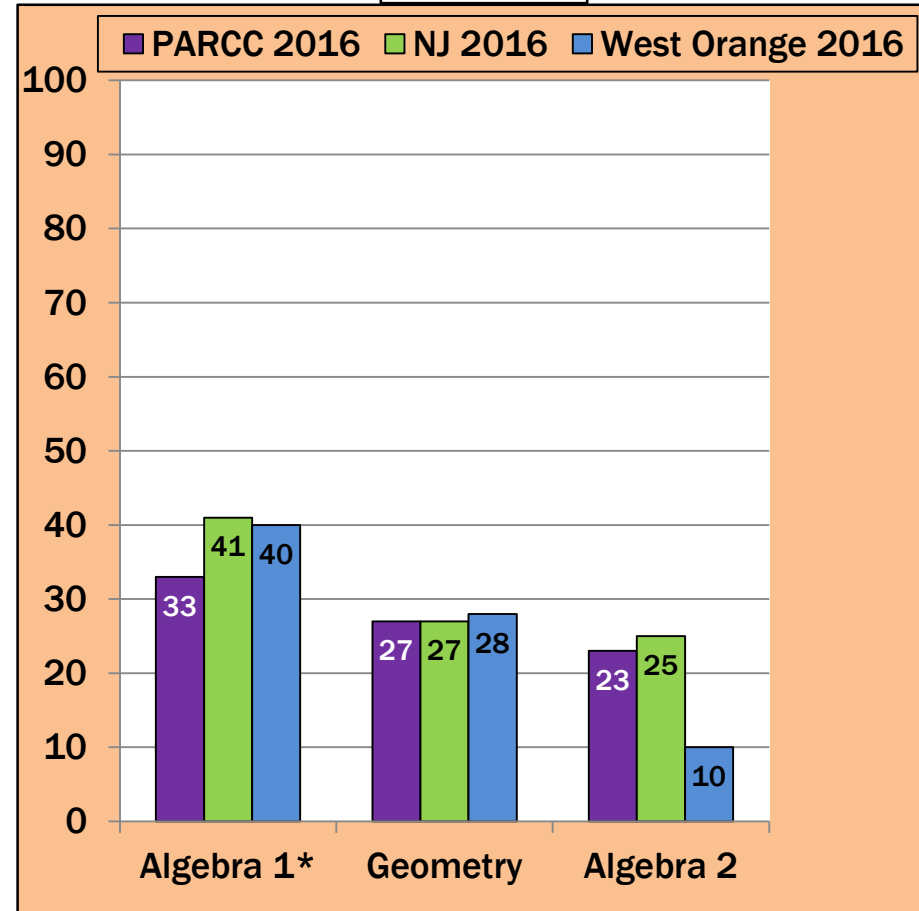
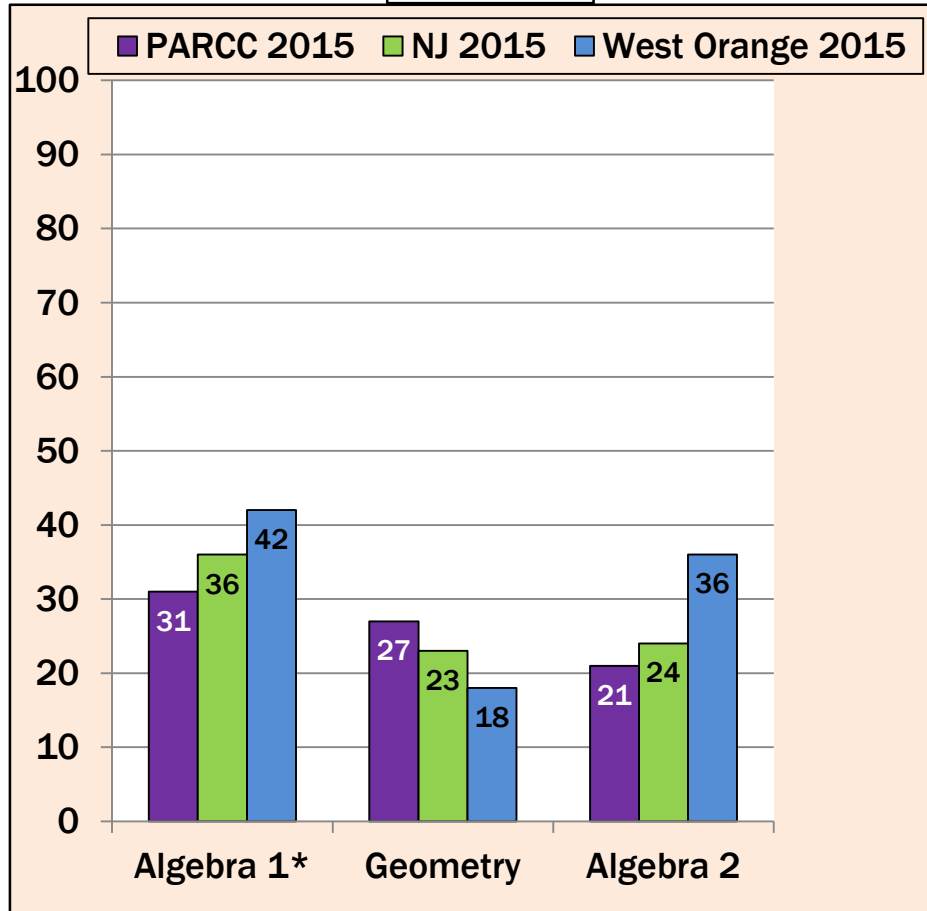
PERCENT OF STUDENTS PASSING IN 2015 & 2016

(MET OR EXCEEDED EXPECTATIONS LEVELS)

MATHEMATICS PARCC GRADES 9 - 12

2015

2016



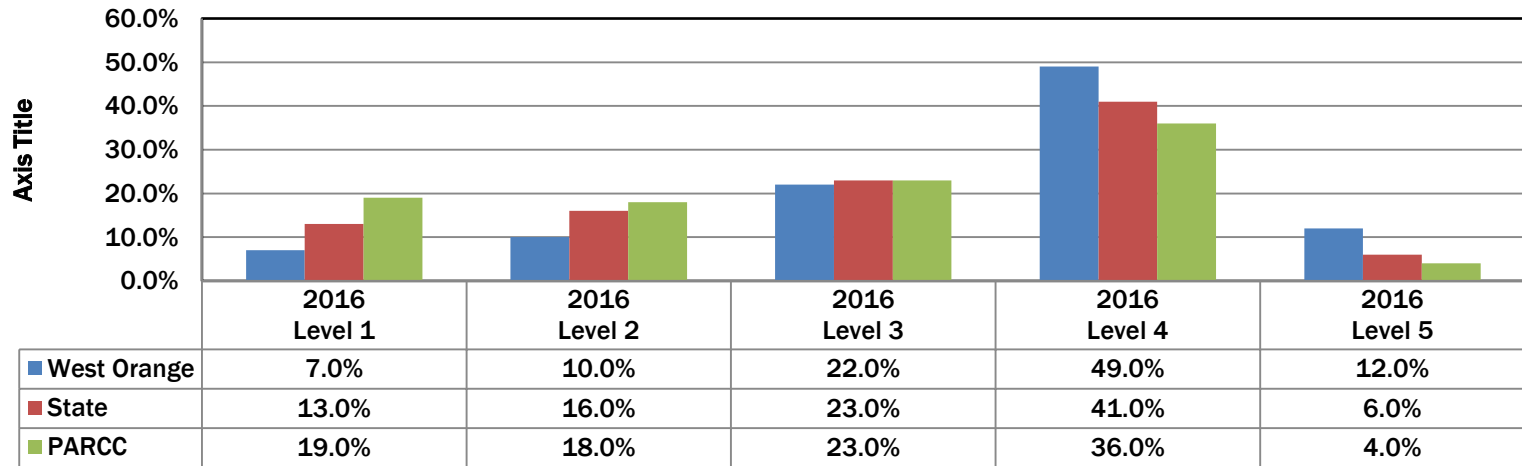
*Includes 124 students from Grade 8 and 319 students from High School level.

*Includes 124 students from Grade 8 and 319 students from High School level.

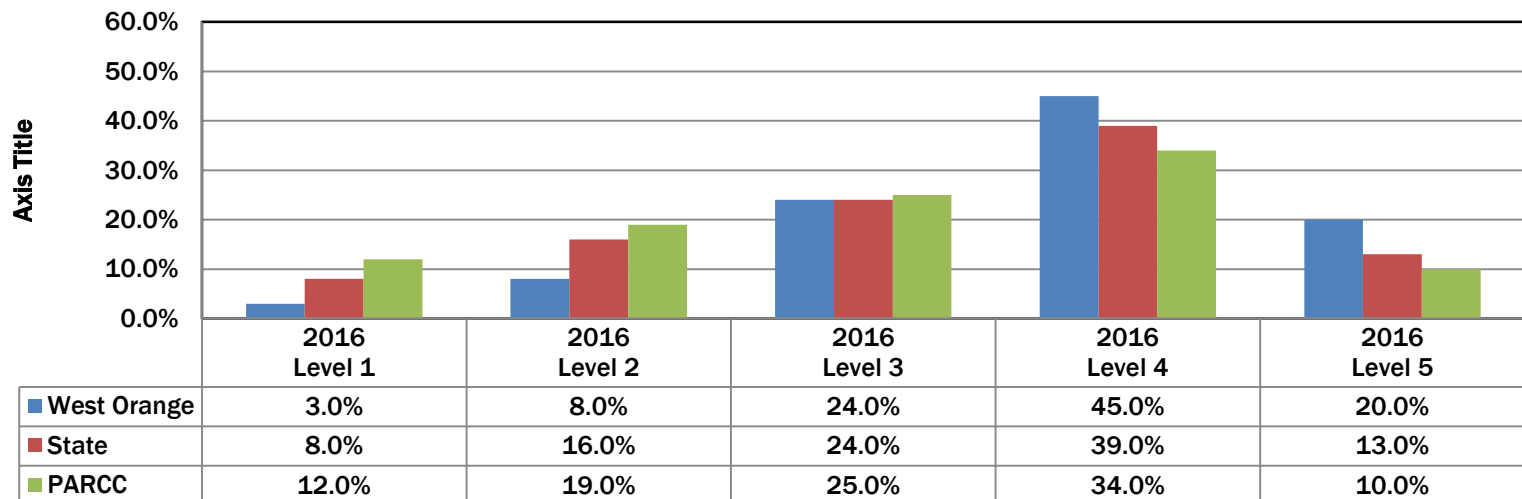
HOW DID OUR DISTRICT PERFORM
ON PARCC ASSESSMENTS IN 2016?

Percentage of Students at Each Performance Level: Levels 4 & 5 are Proficient

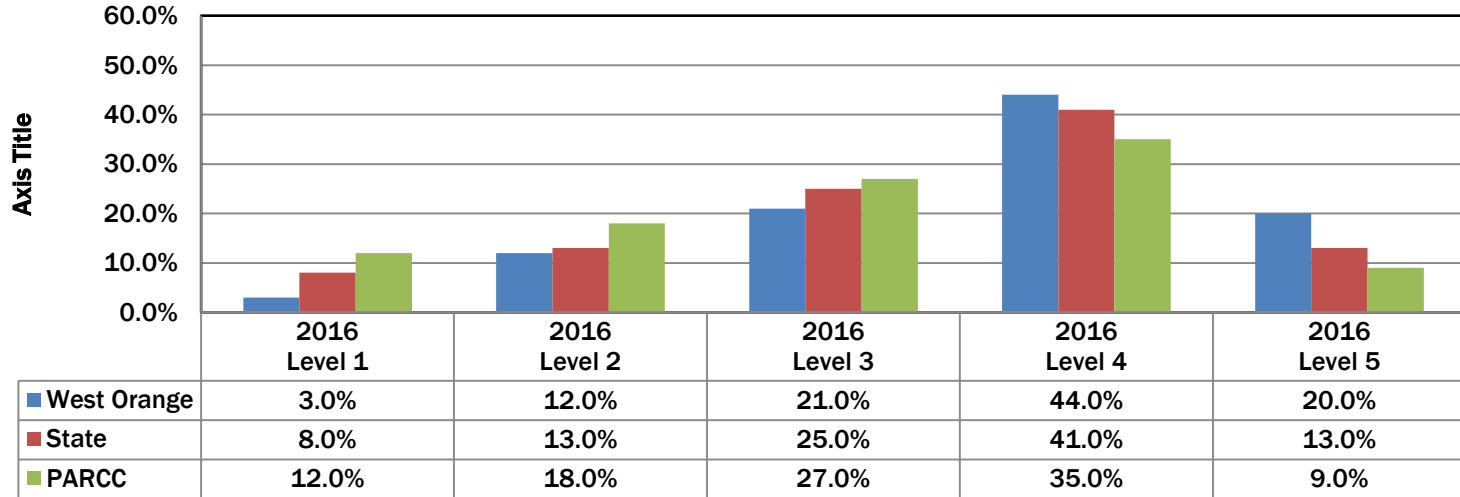
2016 PARCC Performance Levels
ELA Grade 3



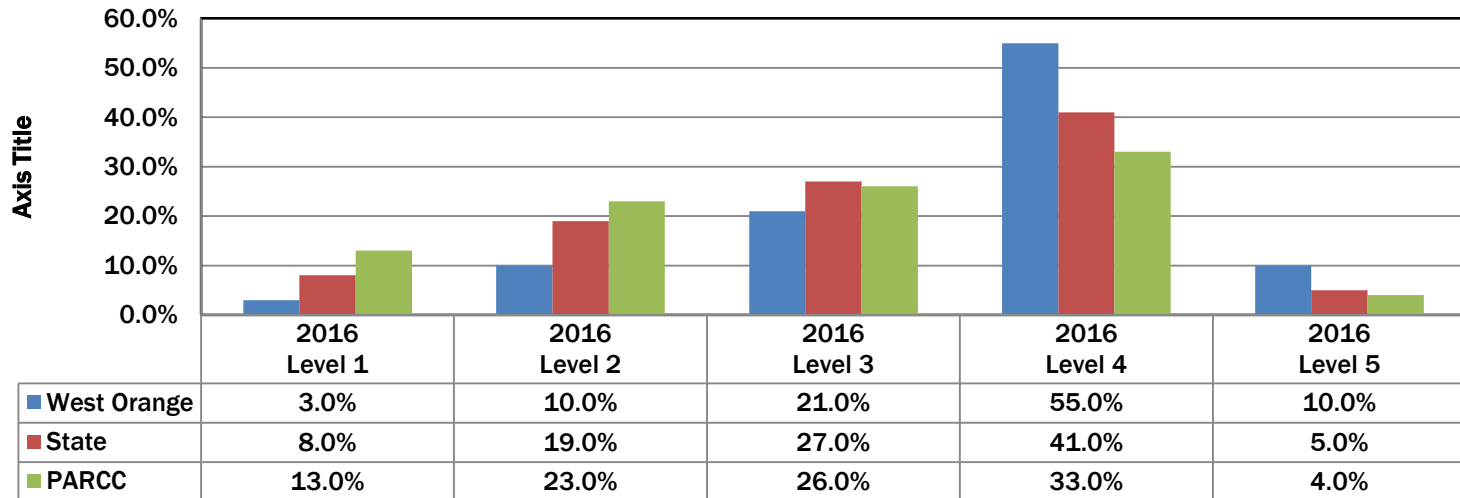
2016 PARCC Performance Levels
Mathematics Grade 3



2016 PARCC Performance Levels ELA Grade 4

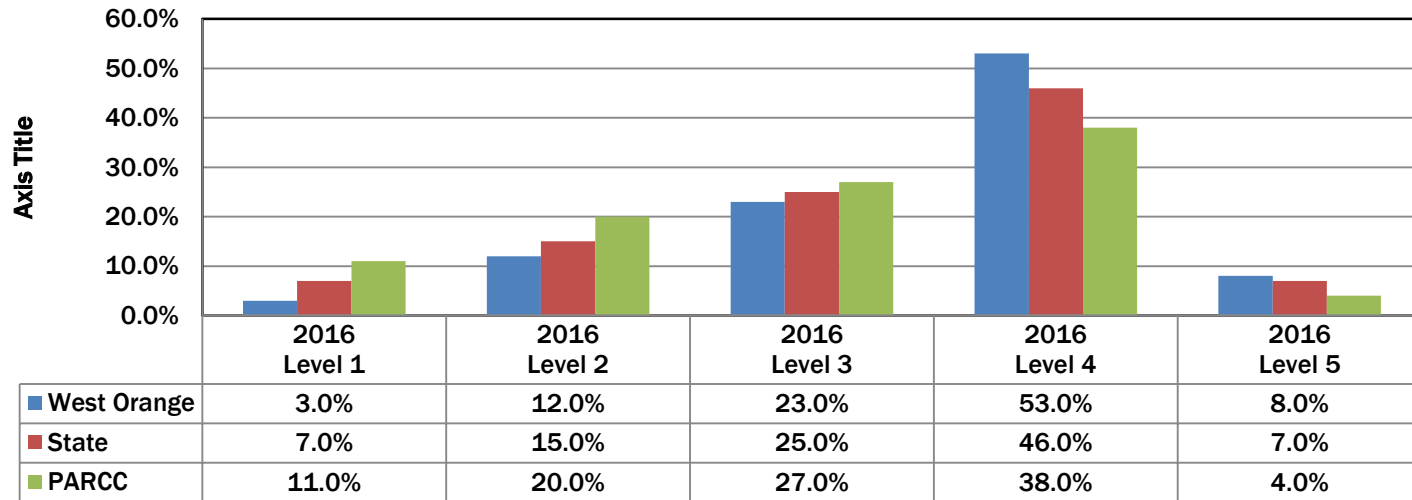


2016 PARCC Performance Levels Mathematics Grade 4



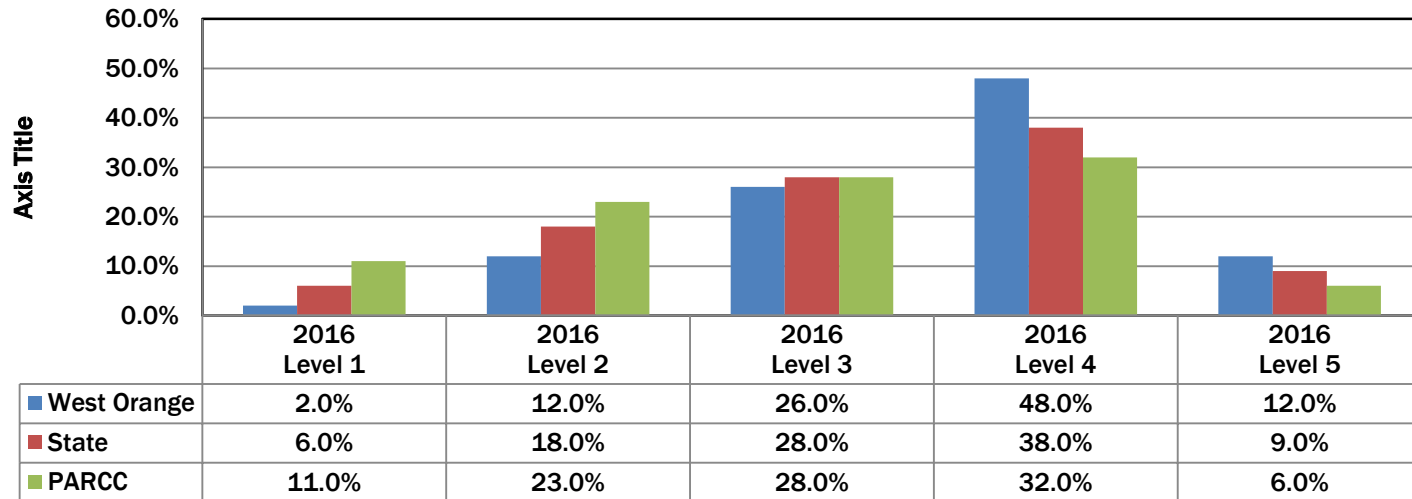
2016 PARCC Performance Levels

ELA Grade 5

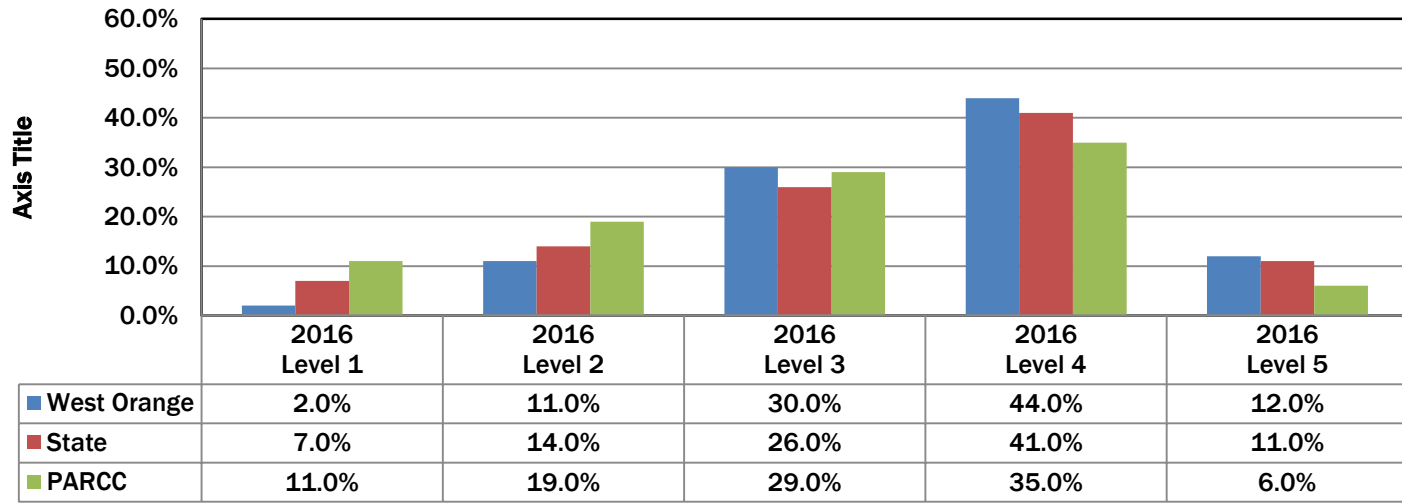


2016 PARCC Performance Levels

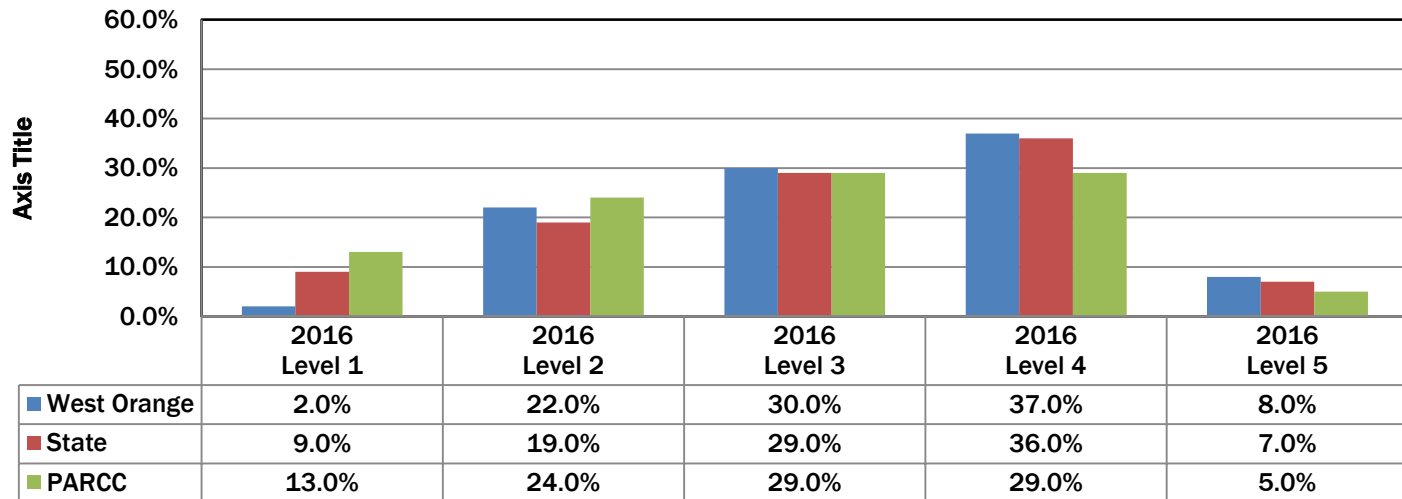
Mathematics Grade 5



2016 PARCC Performance Levels ELA Grade 6

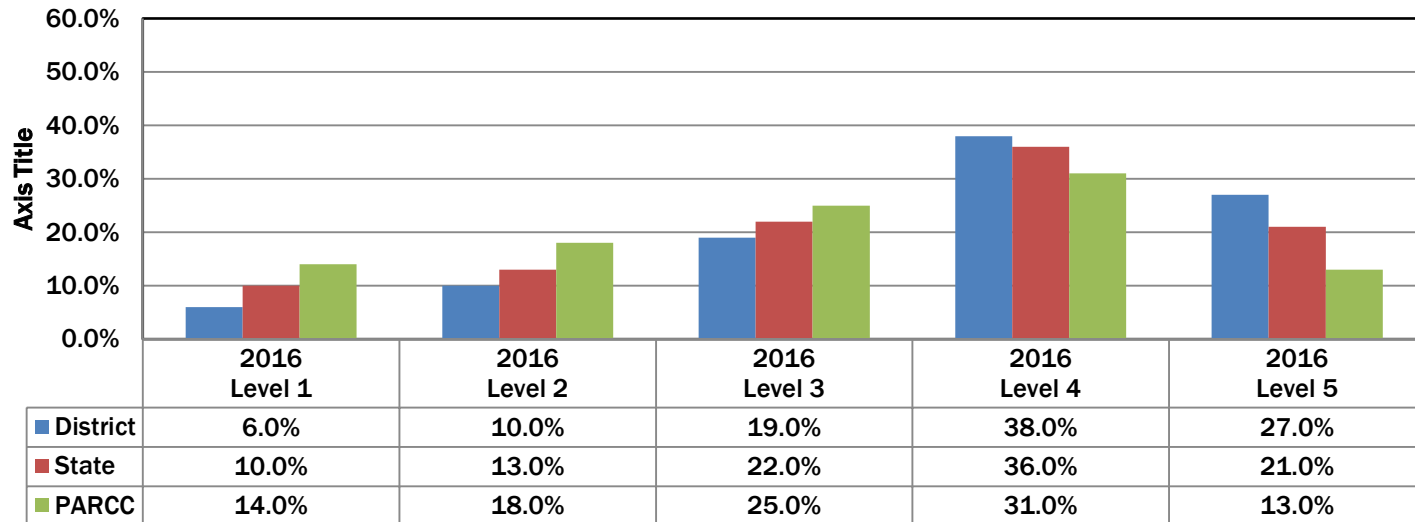


2016 PARCC Performance Levels Mathematics Grade 6



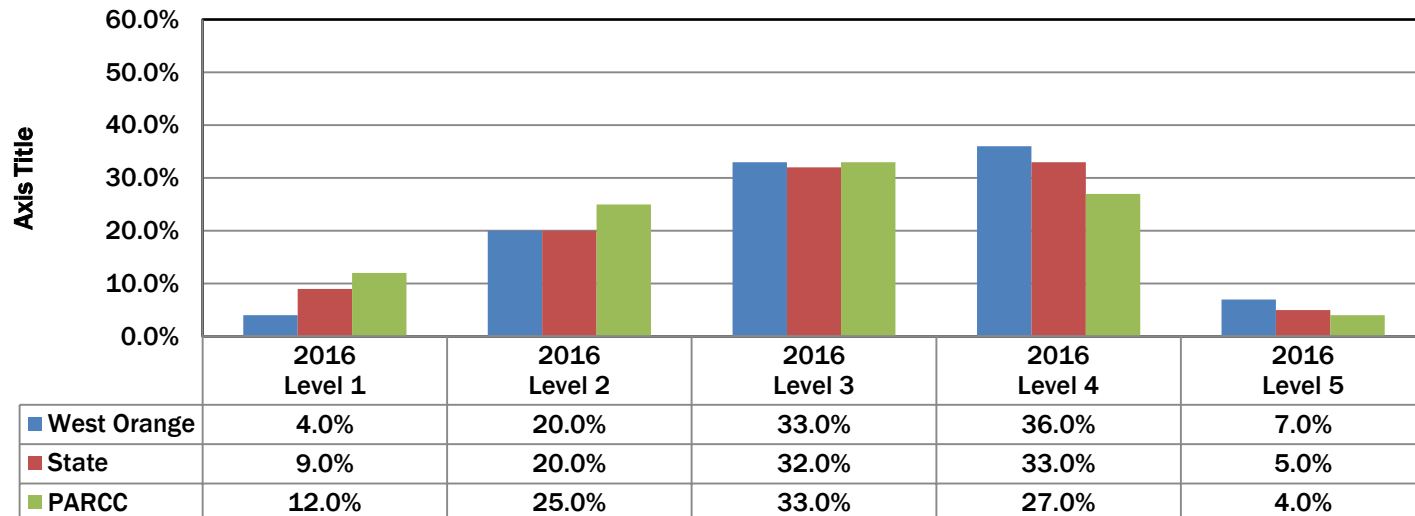
2016 PARCC Performance Levels

ELA Grade 7

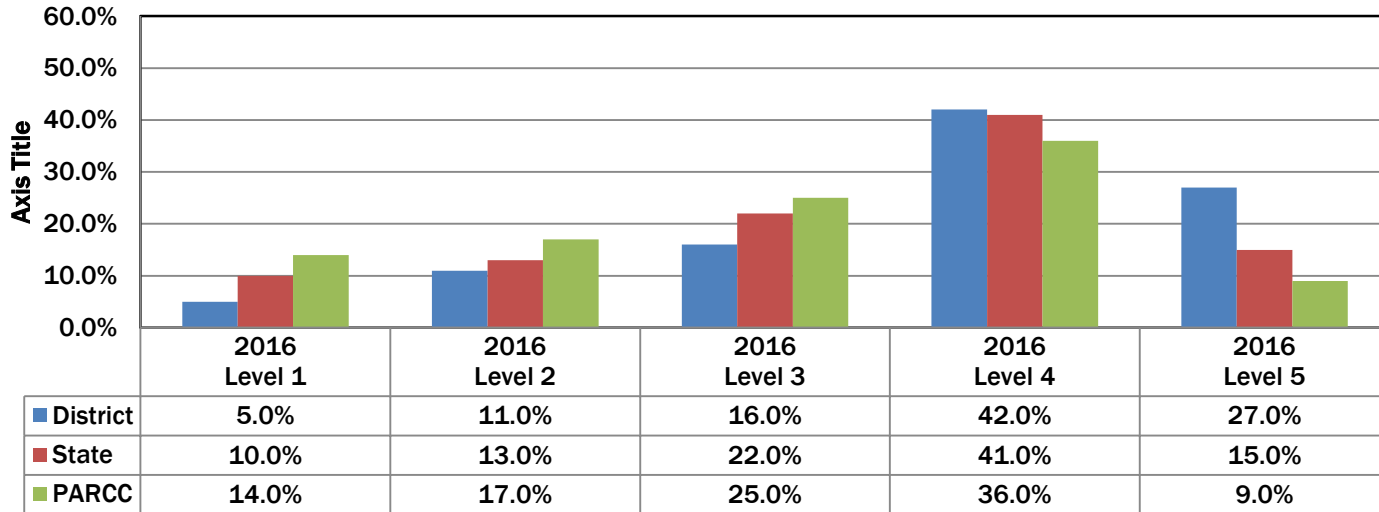


2016 PARCC Performance Levels

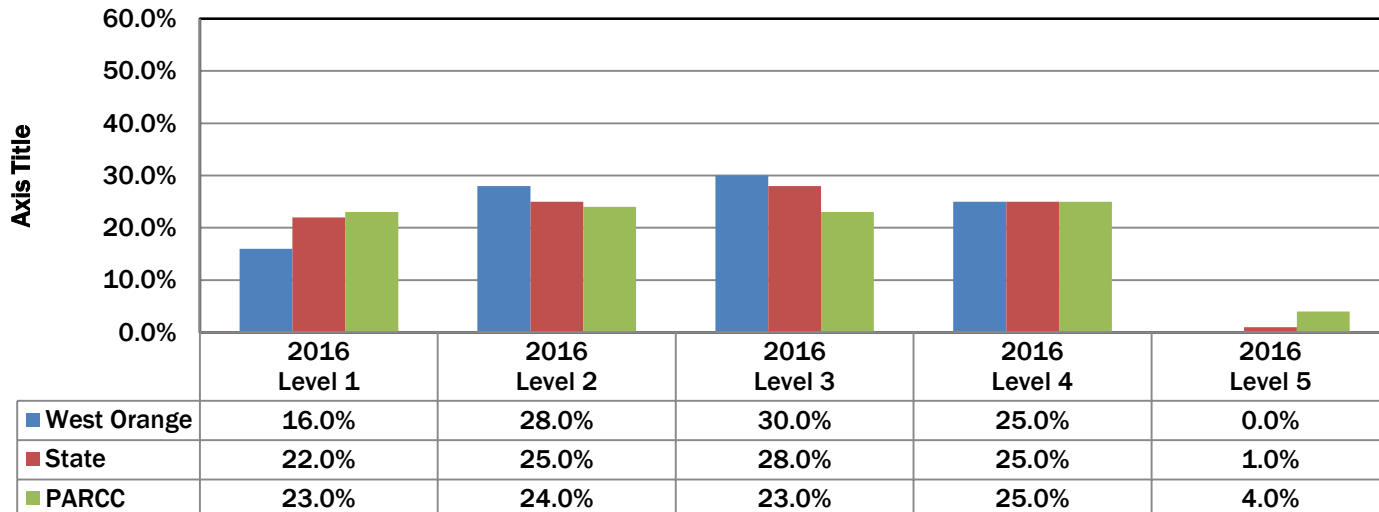
Mathematics Grade 7



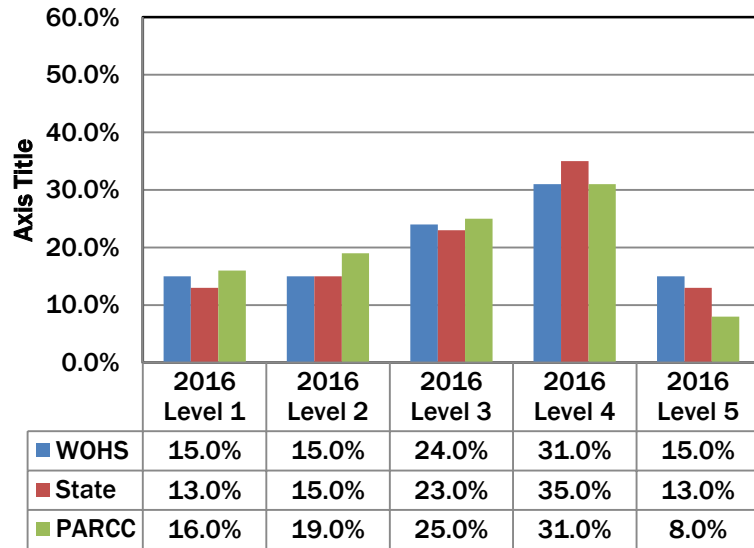
2016 PARCC Performance Levels ELA Grade 8



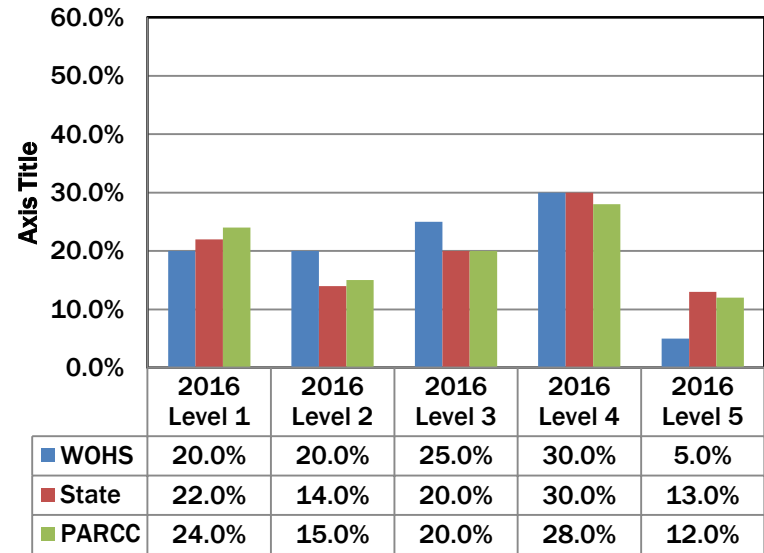
2016 PARCC Performance Levels Mathematics Grade 8



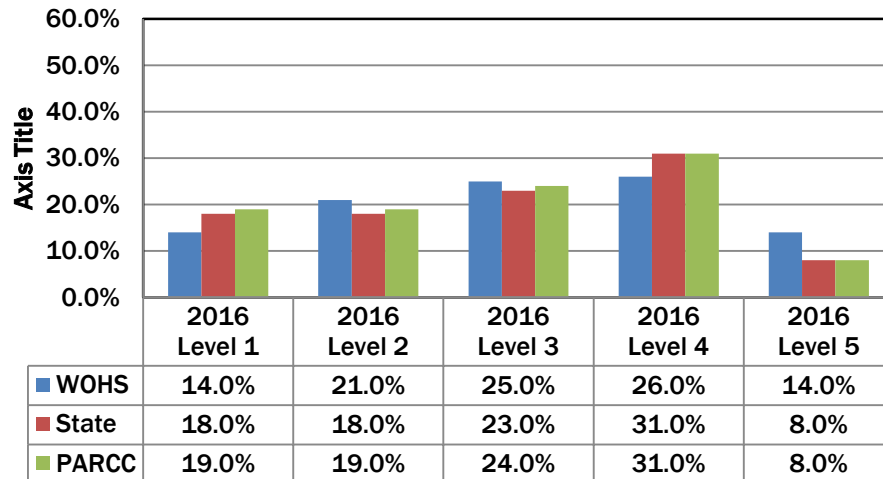
2016 PARCC Performance Levels English 9



2016 PARCC Performance Levels English 10

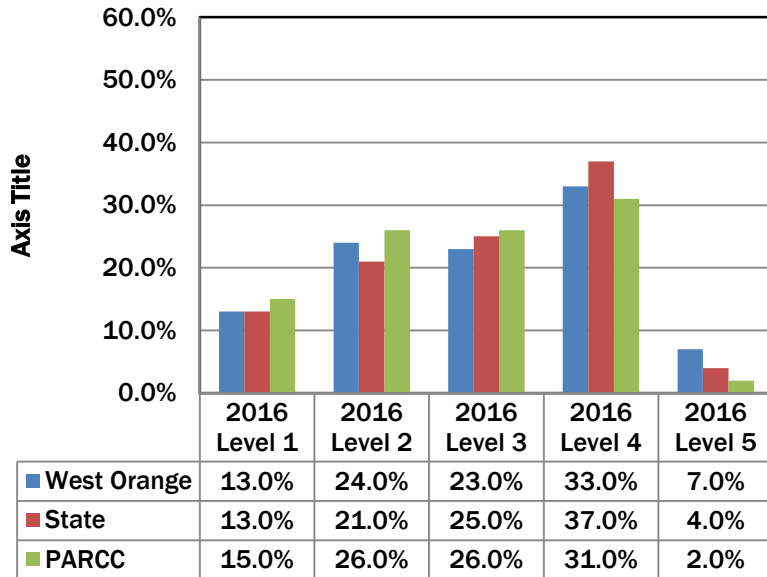


2016 PARCC Performance Levels English 11



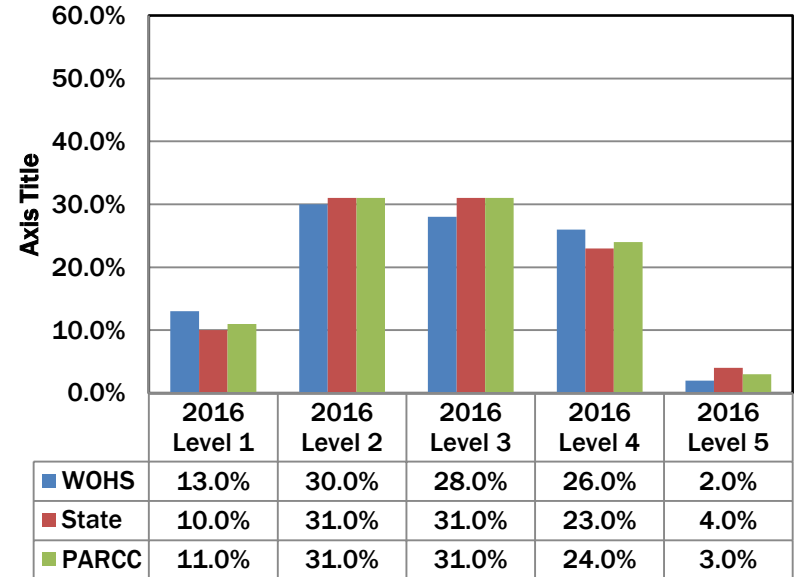
2016 PARCC Performance Levels

Algebra I



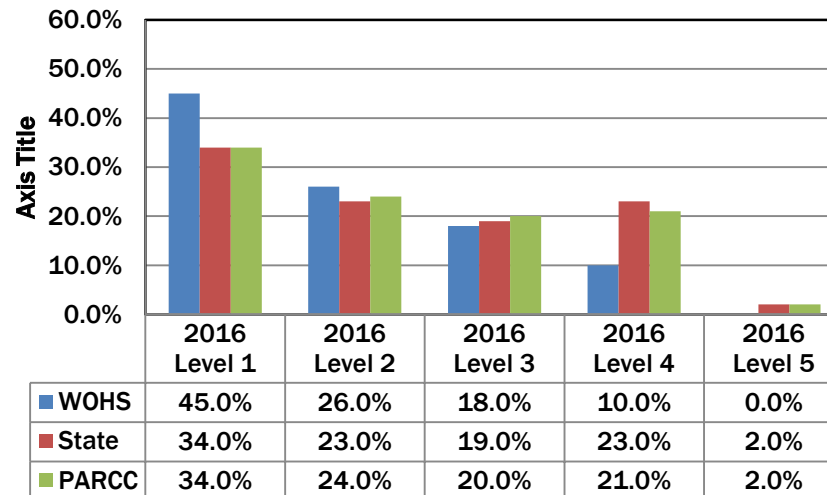
2016 PARCC Performance Levels

Geometry



2016 PARCC Performance Levels

Algebra 2



HOW DID OUR SCHOOLS PERFORM
ON PARCC ASSESSMENTS IN 2016?

WEST ORANGE SCHOOL DISTRICT: **GRADES 3 - 5** 2016 PARCC GRADE-LEVEL OUTCOMES BY SCHOOL

English Language Arts/Literacy and Mathematics 2016

	2016 ELA Grade 3 % Passing	2016 Math Grade 3 % Passing	2016 ELA Grade 4 % Passing	2016 Math Grade 4 % Passing	2016 ELA Grade 5 % Passing	2016 Math Grade 5 % Passing
Gregory	60%	58%	80%	75%	54%	68%
Hazel	65%	68%	51%	56%	56%	60%
Mt. Pleasant	57%	57%	72%	69%	67%	59%
Kelly	61%	53%	69%	66%	70%	43%
Redwood	70%	74%	73%	71%	64%	68%
St. Cloud	77%	83%	71%	71%	82%	71%
Washington	38%	57%	35%	50%	46%	49%
District	61%	65%	64%	65%	61%	60%
State	40%	52%	54%	46%	53%	47%

WEST ORANGE SCHOOL DISTRICT: **CURRENT 5TH & 6TH GRADES**
 2016 PARCC GRADE-LEVEL OUTCOMES BY SCHOOL

English Language Arts/Literacy: Longitudinal
(same students from 2015 and 2016)

	Current 5 th Grade			Current 6 th Grade		
	2015 Grade 3 % Passing	2016 Grade 4 % Passing	Change in % Passing	2015 Grade 4 % Passing	2016 Grade 5 % Passing	Change in % Passing
Gregory	78%	80%	+2	57%	54%	-3
Hazel	43%	51%	+8	45%	56%	+11
Mt. Pleasant	62%	72%	+10	58%	67%	+9
Kelly	46%	69%	+23	54%	70%	+16
Redwood	66%	73%	+7	82%	64%	-18
St. Cloud	74%	71%	-3	83%	82%	-1
Washington	36%	35%	-1	46%	46%	NC
District	58%	64%	+6	60%	61%	+1
State	44%	54%	+10	51%	53%	+2

WEST ORANGE SCHOOL DISTRICT: **CURRENT 5TH & 6TH GRADES**
 2016 PARCC GRADE-LEVEL OUTCOMES BY SCHOOL

Mathematics: Longitudinal
(same students from 2015 and 2016)

	Current 5 th Grade			Current 6 th Grade		
	2015 Grade 3 % Passing	2016 Grade 4 % Passing	Change in % Passing	2015 Grade 4 % Passing	2016 Grade 5 % Passing	Change in % Passing
Gregory	70%	75%	+5	45%	68%	+23
Hazel	51%	56%	+5	39%	60%	+21
Mt. Pleasant	62%	69%	+7	51%	59%	+8
Kelly	44%	66%	+22	35%	43%	+8
Redwood	73%	71%	-2	67%	68%	+1
St. Cloud	80%	71%	-9	67%	71%	+4
Washington	42%	50%	+8	41%	49%	+8
District	60%	65%	+5	49%	60%	+11
State	45%	46%	+1	40%	47%	+7

WEST ORANGE SCHOOL DISTRICT: **GRADES 6 - 8**
 2016 PARCC GRADE-LEVEL OUTCOMES BY SCHOOL

English Language Arts/Literacy and Mathematics 2016

	2016 ELA Grade 6 % Passing	2016 Math Grade 6 % Passing	2016 ELA Grade 7 % Passing	2016 Math Grade 7 % Passing	2016 ELA Grade 8 % Passing	2016 Math Grade 8 % Passing
Edison M.S.	56%	45%				
Liberty M.S.			65%	45%	74%	29%
Roosevelt M.S.			68%	42%	64%	23%
District	56%	45%	65%	43%	69%	25%
State	52%	43%	57%	38%	56%	26%

WEST ORANGE SCHOOL DISTRICT: **CURRENT 9TH GRADE** 2016 PARCC GRADE-LEVEL OUTCOMES BY SCHOOL

ELA and Mathematics: Longitudinal **(same students from 2015 and 2016)**

English Language Arts/Literacy

	2015 Grade 7 % Passing	2016 Grade 8 % Passing	Change in % Passing
Liberty	60%	74%	+14
Roosevelt	63%	64%	+1
District	61%	69%	+8
State	52%	56%	+4

Mathematics

	2015 Grade 7 % Passing	2016 Grade 8* % Passing	Change in % Passing
Liberty	39%	29%	-10
Roosevelt	44%	23%	-21
District	41%	25%	-16
State	37%	26%	-11

*Math Grade 8 excludes students that participated in Algebra I.

WEST ORANGE SCHOOL DISTRICT: **GRADES 9-12**
 2016 PARCC GRADE-LEVEL OUTCOMES BY SCHOOL

English Language Arts/Literacy and Mathematics 2016

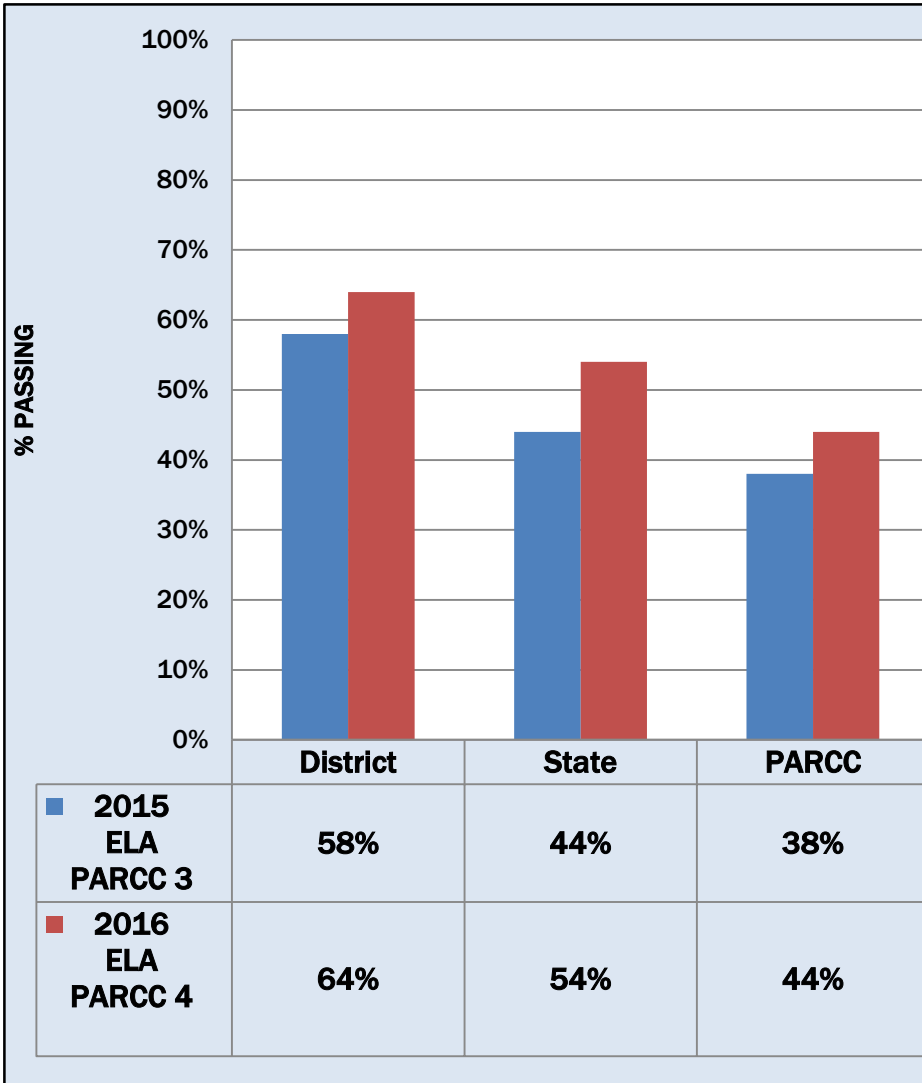
	2016 English 9 % Passing	2016 English 10 % Passing	2016 English 11 % Passing
WOHS	46%	35%	40%
State	48%	43%	39%

	2016 Algebra 1 % Passing	2016 Geometry % Passing	2016 Algebra 2 % Passing
Liberty M.S.	95%		
Roosevelt M.S.	97%		
WOHS	19%	28%	10%
District	40%		
State	41%	27%	25%

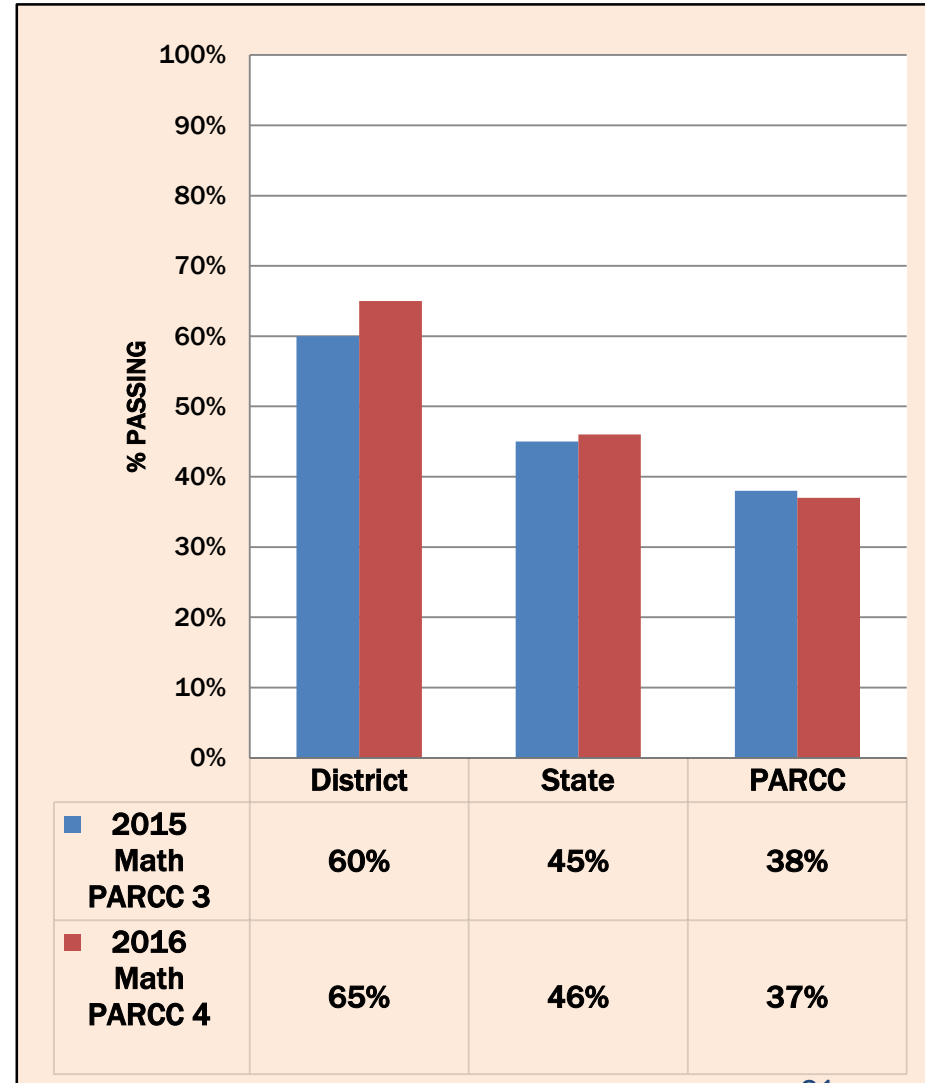
HOW DID THE SAME GROUP OF
STUDENTS DO OVER TIME?
LONGITUDINAL

Longitudinal: Comparison of West Orange, State, and PARCC

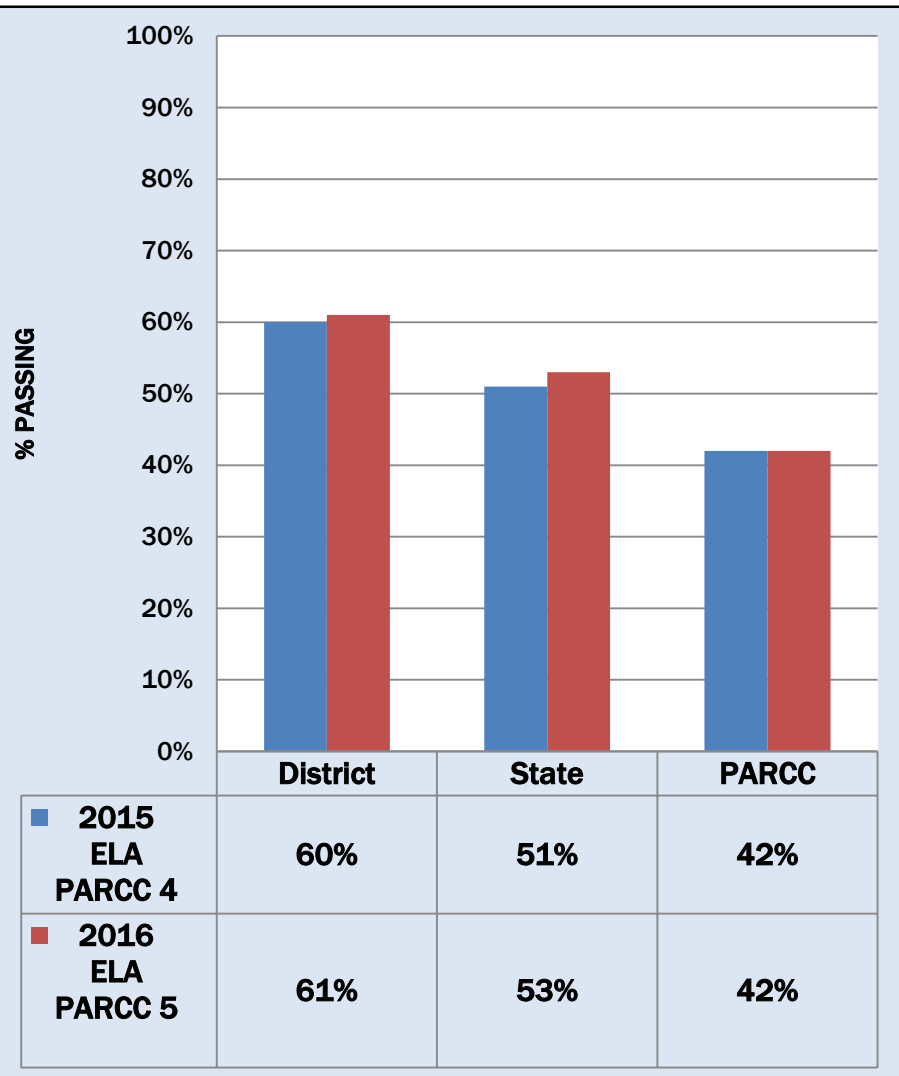
Longitudinal
Current **Grade 5** Students
English Language Arts/Literacy



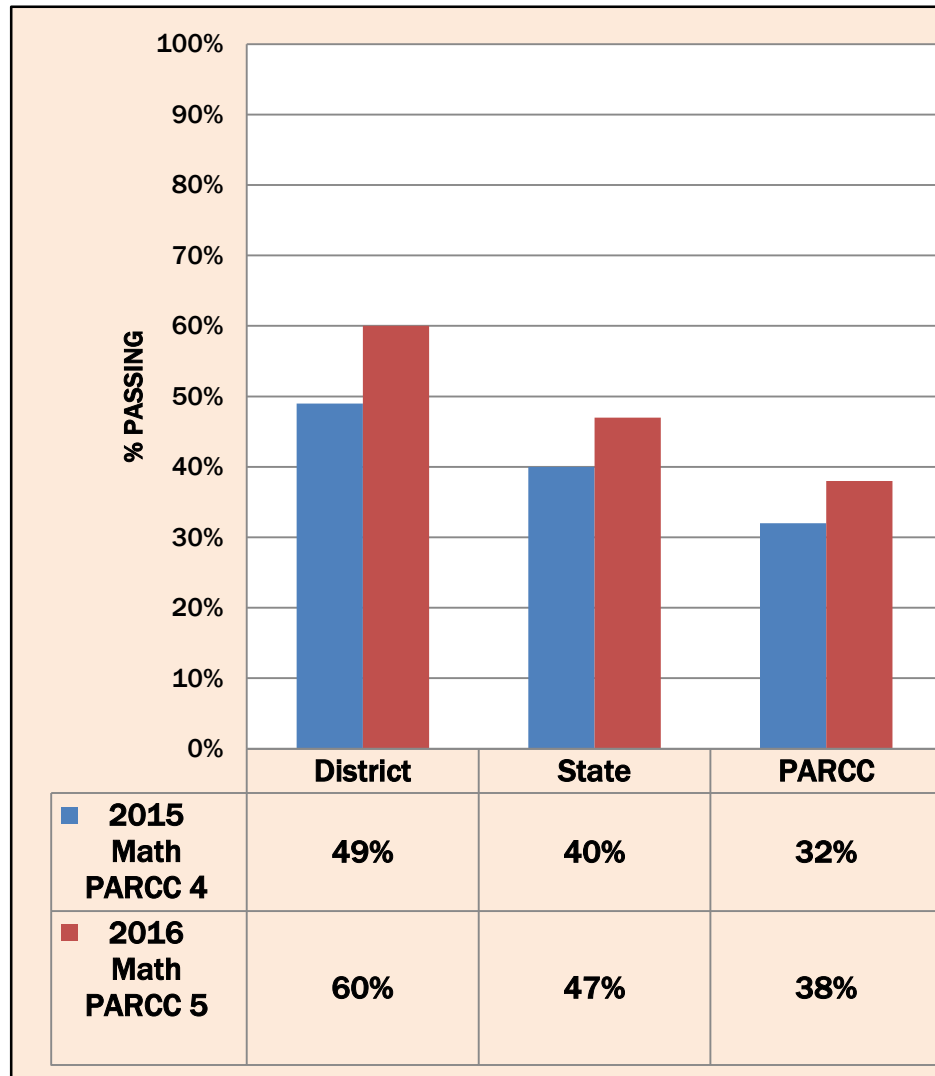
Longitudinal
Current **Grade 5** Students
Mathematics



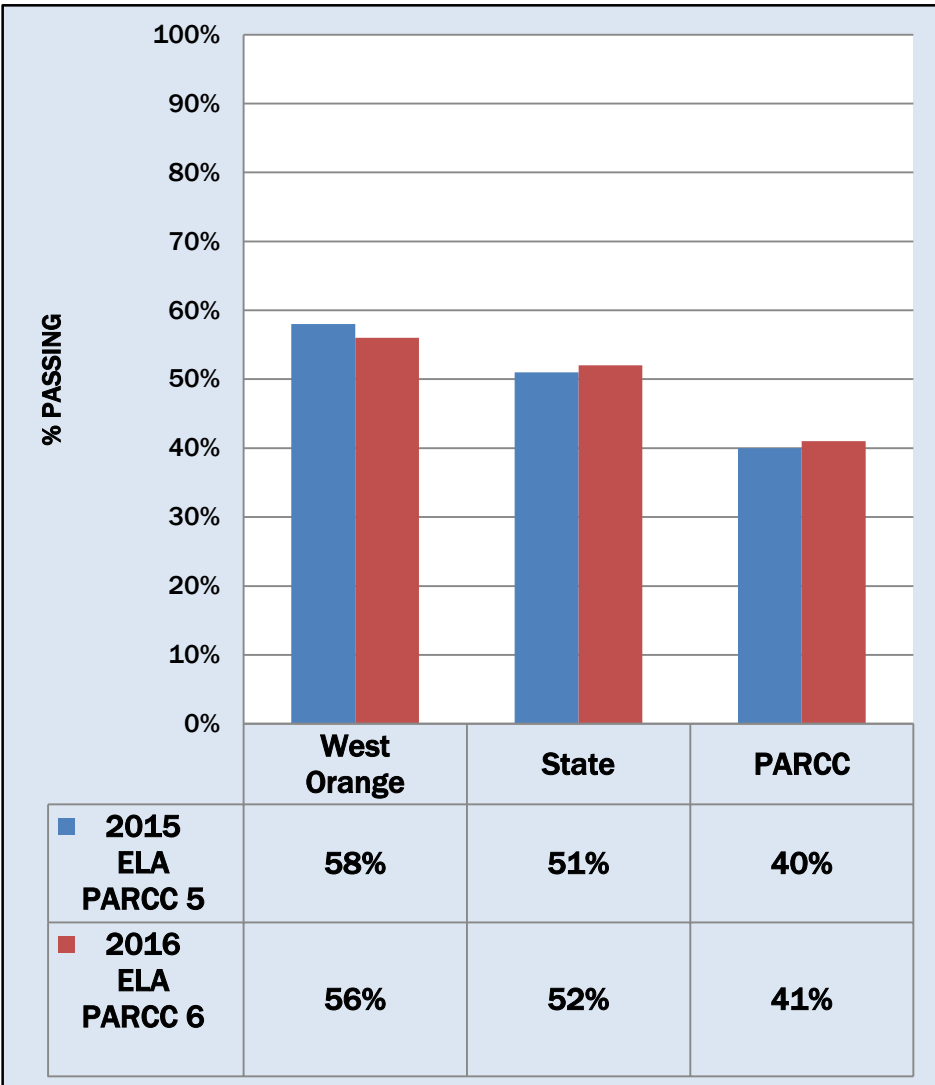
**Longitudinal
Current Grade 6 Students
English Language Arts/Literacy**



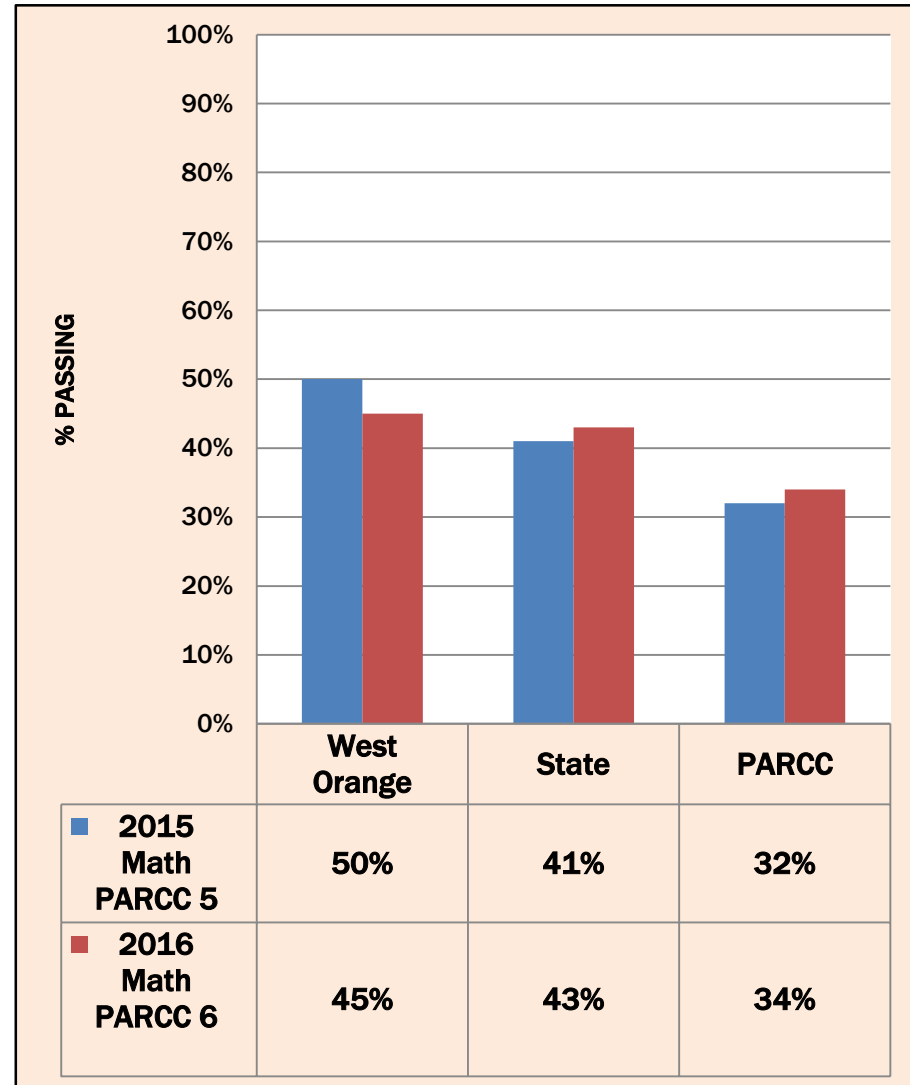
**Longitudinal
Current Grade 6 Students
Mathematics**



**Longitudinal
Current Grade 7 Students
English Language Arts/Literacy**

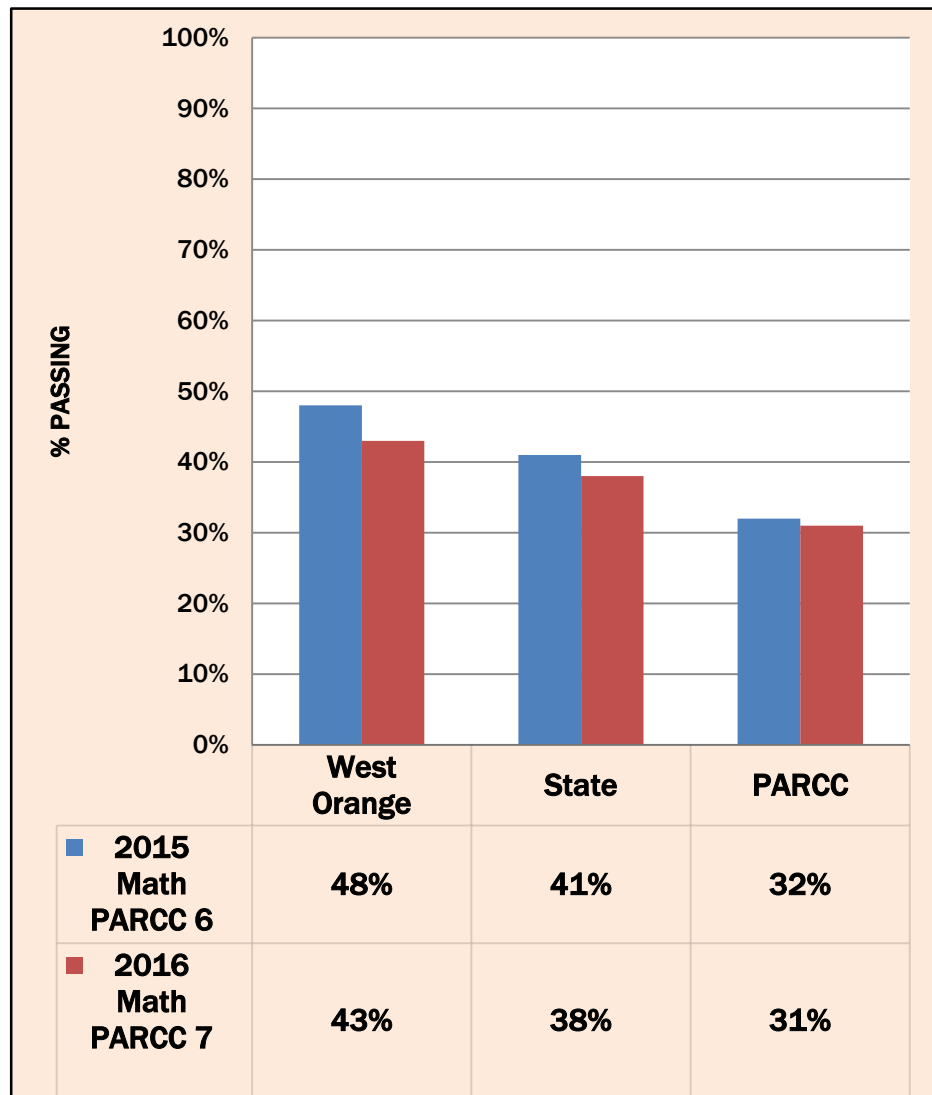
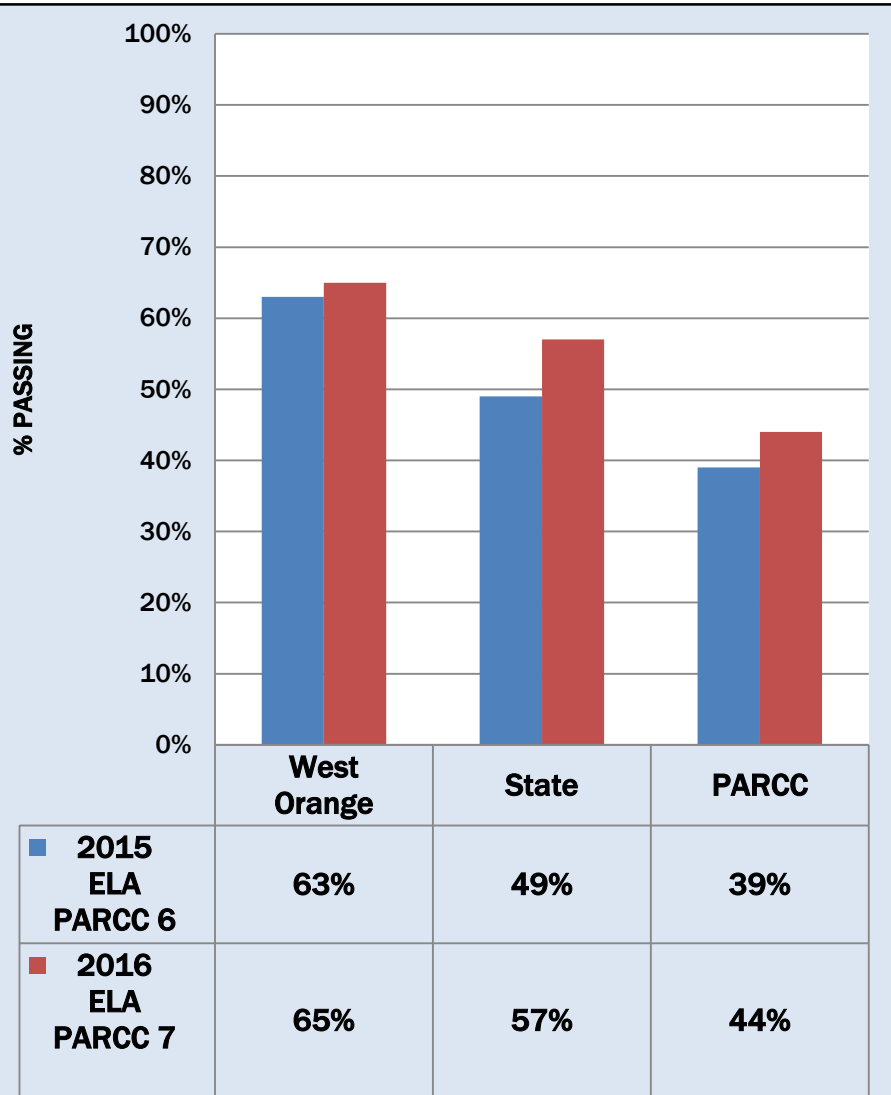


**Longitudinal
Current Grade 7 Students
Mathematics**

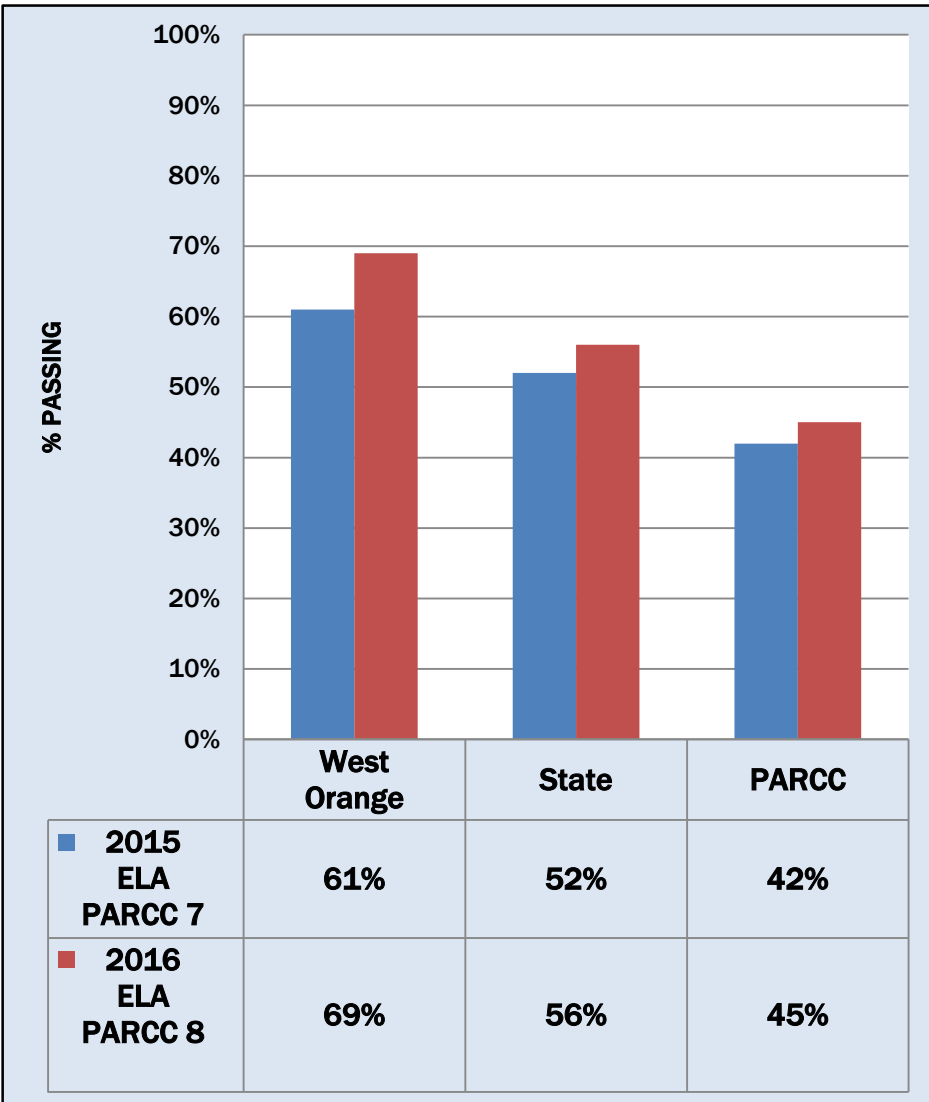


Longitudinal
Current Grade 8 Students
English Language Arts/Literacy

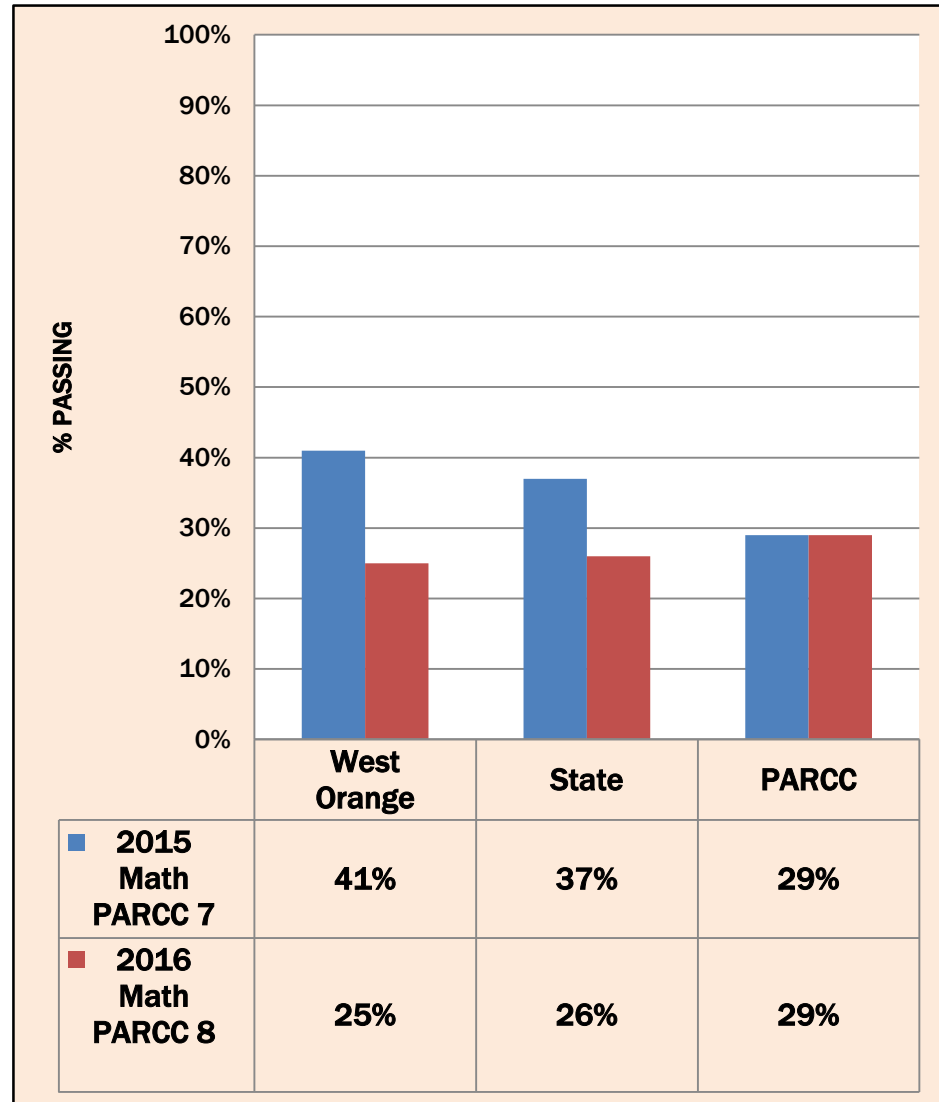
Longitudinal
Current Grade 8 Students
Mathematics



**Longitudinal
Current Grade 9 Students
English Language Arts/Literacy**

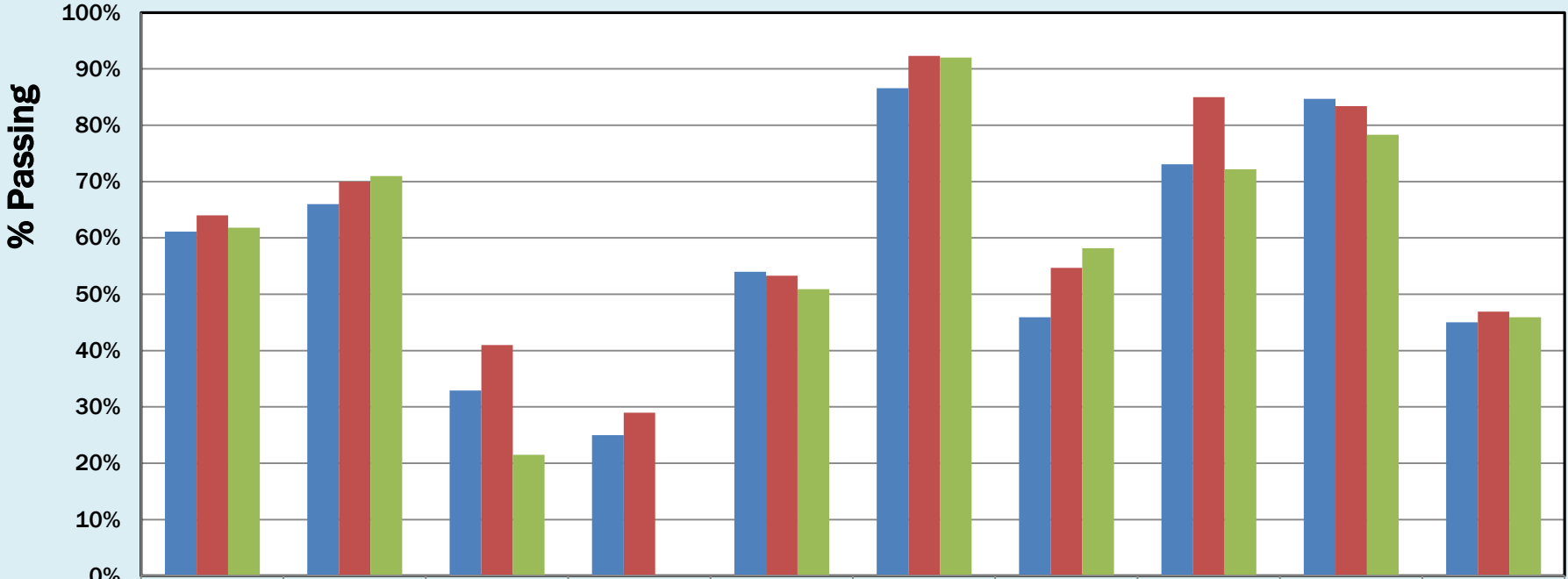


**Longitudinal
Current Grade 9 Students
Mathematics**



HOW DID SUBGROUPS PERFORM?

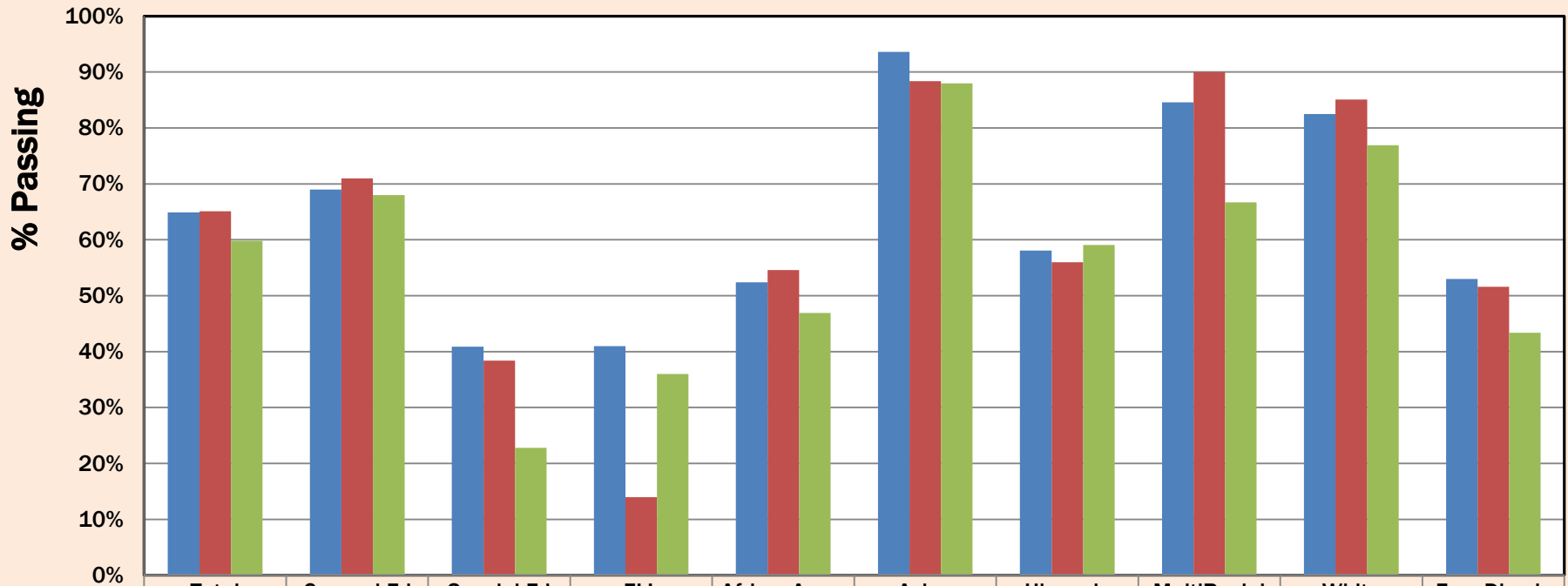
English Language Arts 2016 PARCC Grades 3-5 Subgroup Summary



	Total	General Ed	Special Ed	ELL	AfricanAmer	Asian	Hispanic	MultiRacial	White	EconDisadv
Grade 3	61%	66%	33%	25%	54%	87%	46%	73%	85%	45%
Grade 4	64%	70%	41%	29%	53%	92%	55%	85%	83%	47%
Grade 5	62%	71%	22%	0%	51%	92%	58%	72%	78%	46%

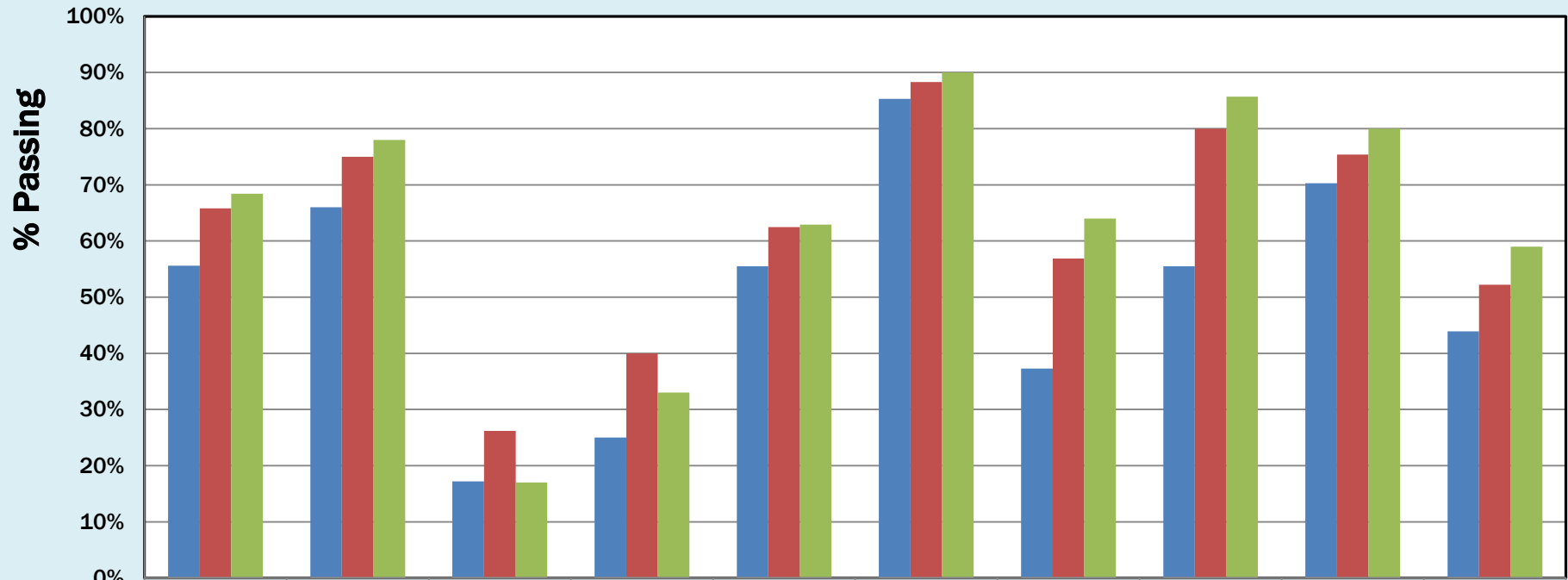
Mathematics

2016 PARCC Grades 3-5 Subgroup Summary



	Total	General Ed	Special Ed	ELL	AfricanAmer	Asian	Hispanic	MultiRacial	White	EconDisadv
■ Grade 3	65%	69%	41%	41%	52%	94%	58%	85%	83%	53%
■ Grade 4	65%	71%	38%	14%	55%	88%	56%	90%	85%	52%
■ Grade 5	60%	68%	23%	36%	47%	88%	59%	67%	77%	43%

English Language Arts 2016 PARCC Grades 6-8 Subgroup Summary

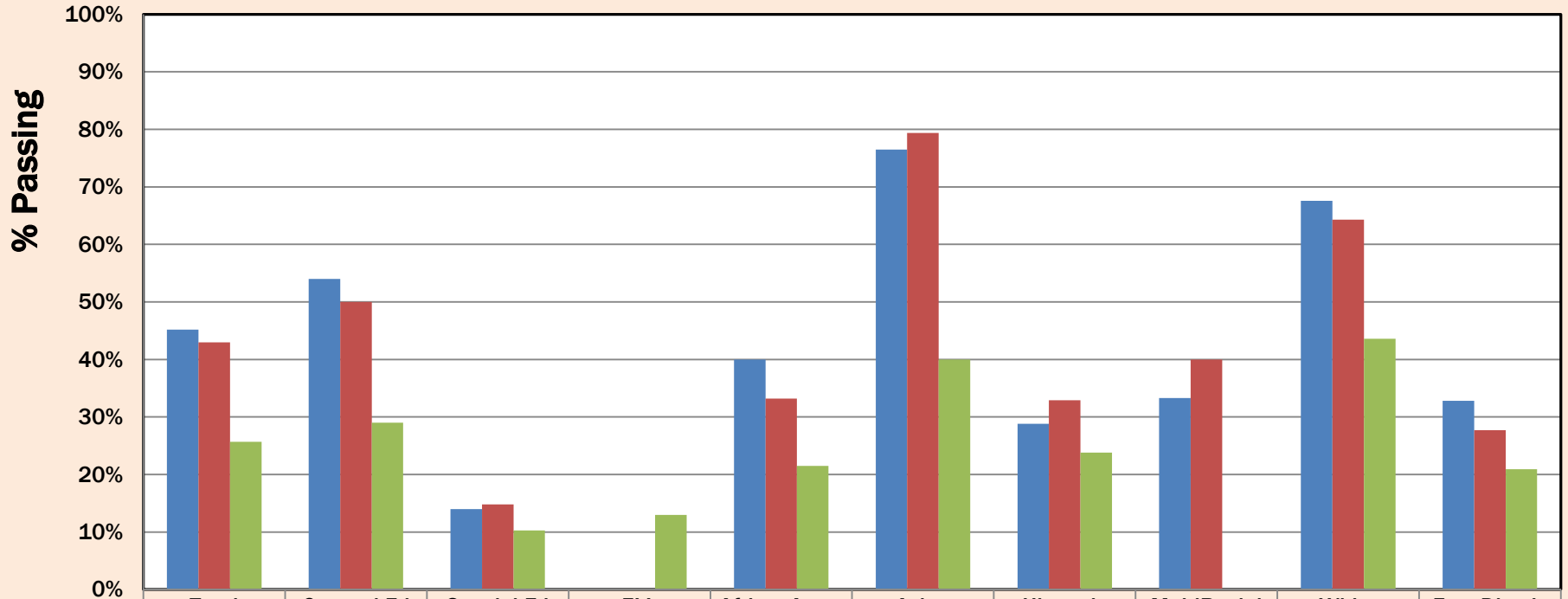


	Total	General Ed	Special Ed	ELL	AfricanAmer	Asian	Hispanic	MultiRacial	White	EconDisadv
Grade 6	56%	66%	17%	25%	56%	85%	37%	56%	70%	44%
Grade 7	66%	75%	26%	40%	63%	88%	57%	80%	75%	52%
Grade 8	68%	78%	17%	33%	63%	90%	64%	86%	80%	59%

Mathematics

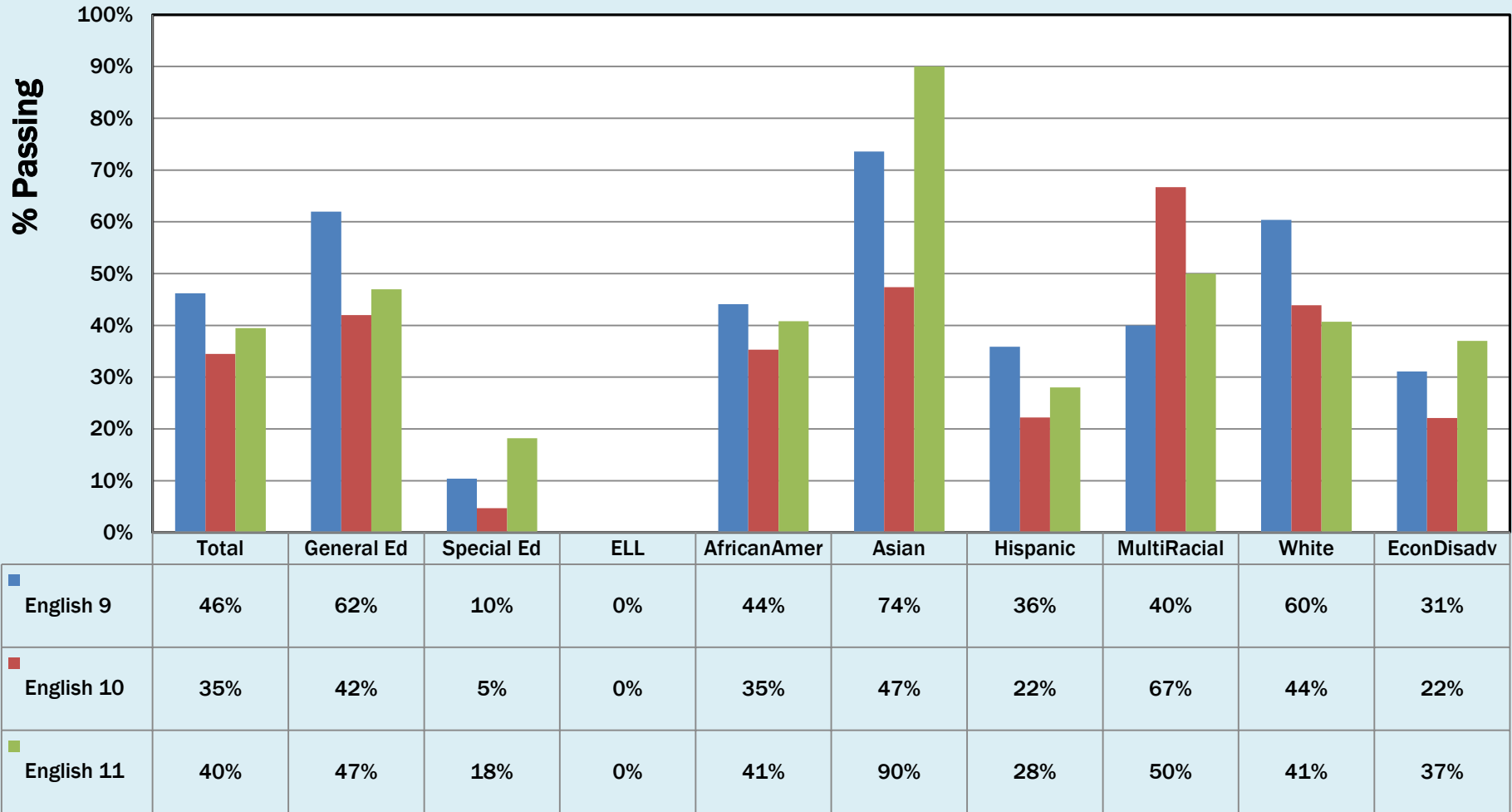
2016 PARCC Grades 6-8

Subgroup Summary

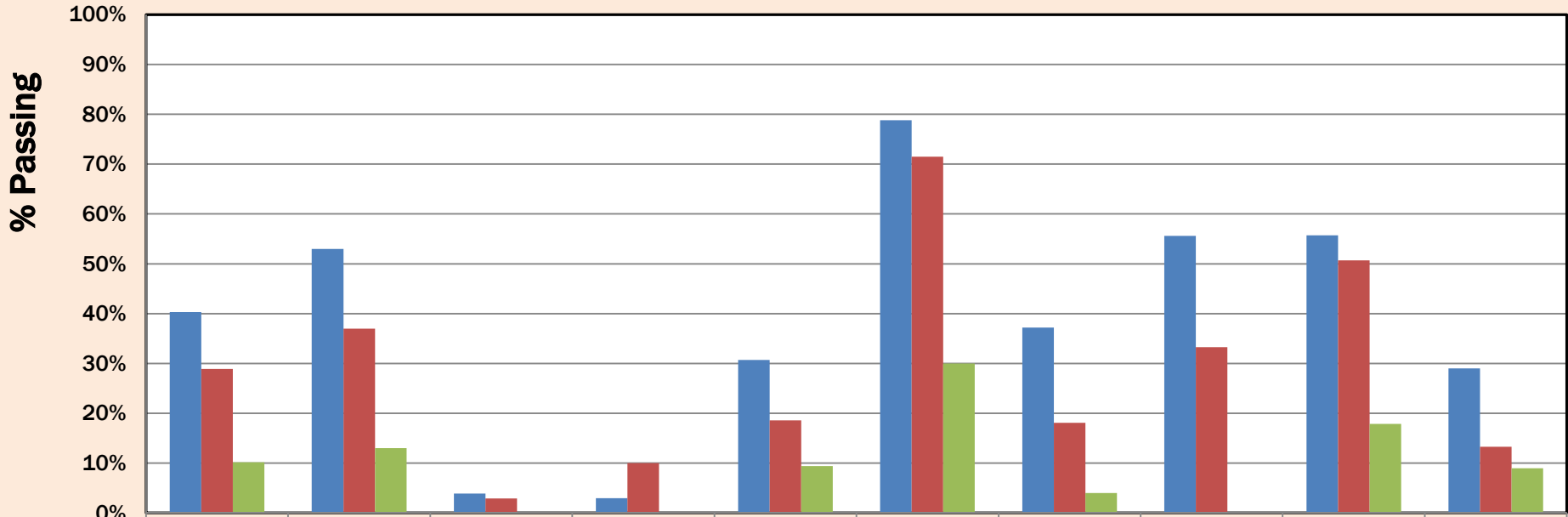


	Total	General Ed	Special Ed	ELL	AfricanAmer	Asian	Hispanic	MultiRacial	White	EconDisadv
Grade 6	45%	54%	14%	0%	40%	77%	29%	33%	68%	33%
Grade 7	43%	50%	15%	0%	33%	79%	33%	40%	64%	28%
Grade 8	26%	29%	10%	13%	22%	40%	24%	0%	44%	21%

English Language Arts 2016 PARCC Grades 9-12 Subgroup Summary



Mathematics 2016 PARCC Grades 9-12 Subgroup Summary

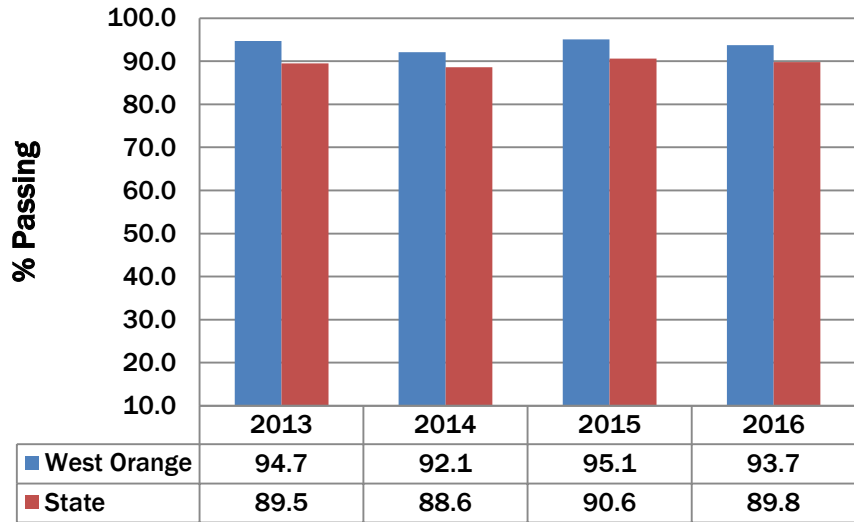


	Total	General Ed	Special Ed	ELL	AfricanAmer	Asian	Hispanic	MultiRacial	White	EconDisadv
Algebra 1	40%	53%	4%	3%	31%	79%	37%	56%	56%	29%
Geometry	29%	37%	3%	10%	19%	72%	18%	33%	51%	13%
Algebra 2	10%	13%	0%	0%	9%	30%	4%	0%	18%	9%

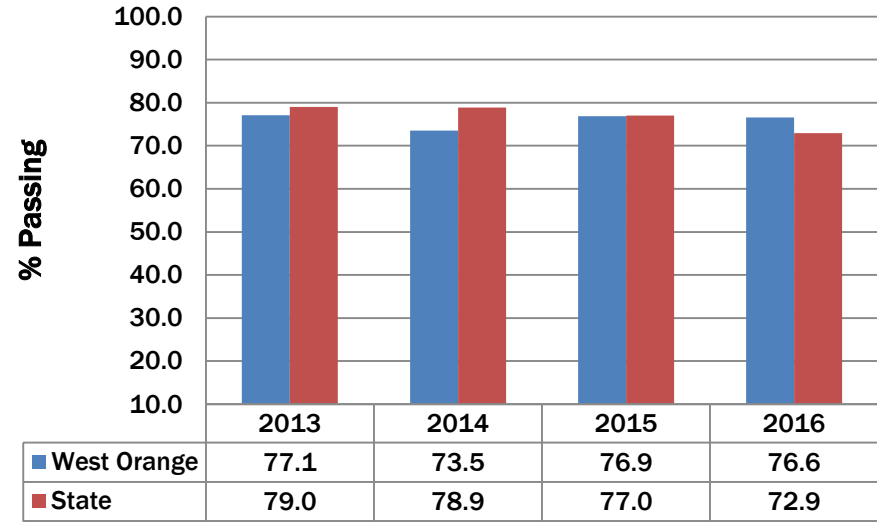
HOW DID OUR DISTRICT PERFORM
ON THE SCIENCE STATE
ASSESSMENTS IN 2016?

NJBCT (BIOLOGY)
NJASK SCIENCE, 4 & 8

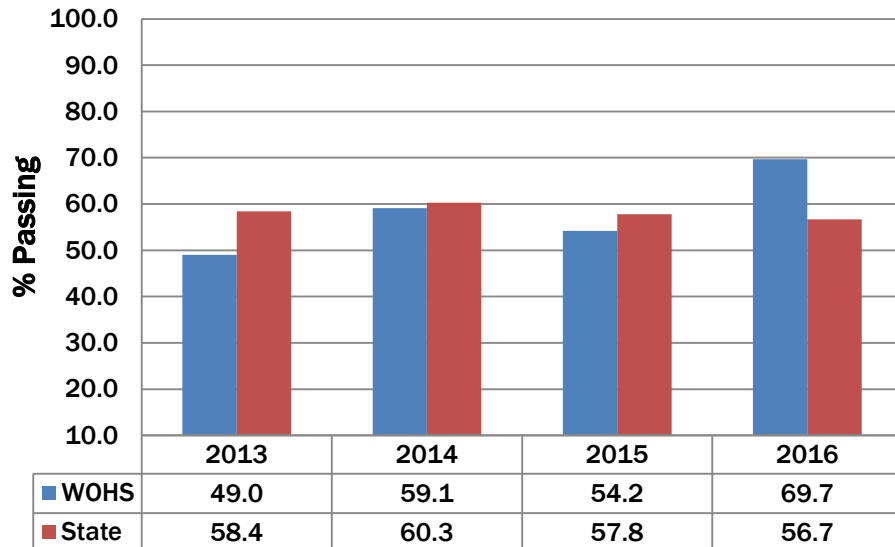
2013 - 2016
West Orange and State Results
NJASK Science Grade 4



2013 - 2016
West Orange and State Results
NJASK Science Grade 8

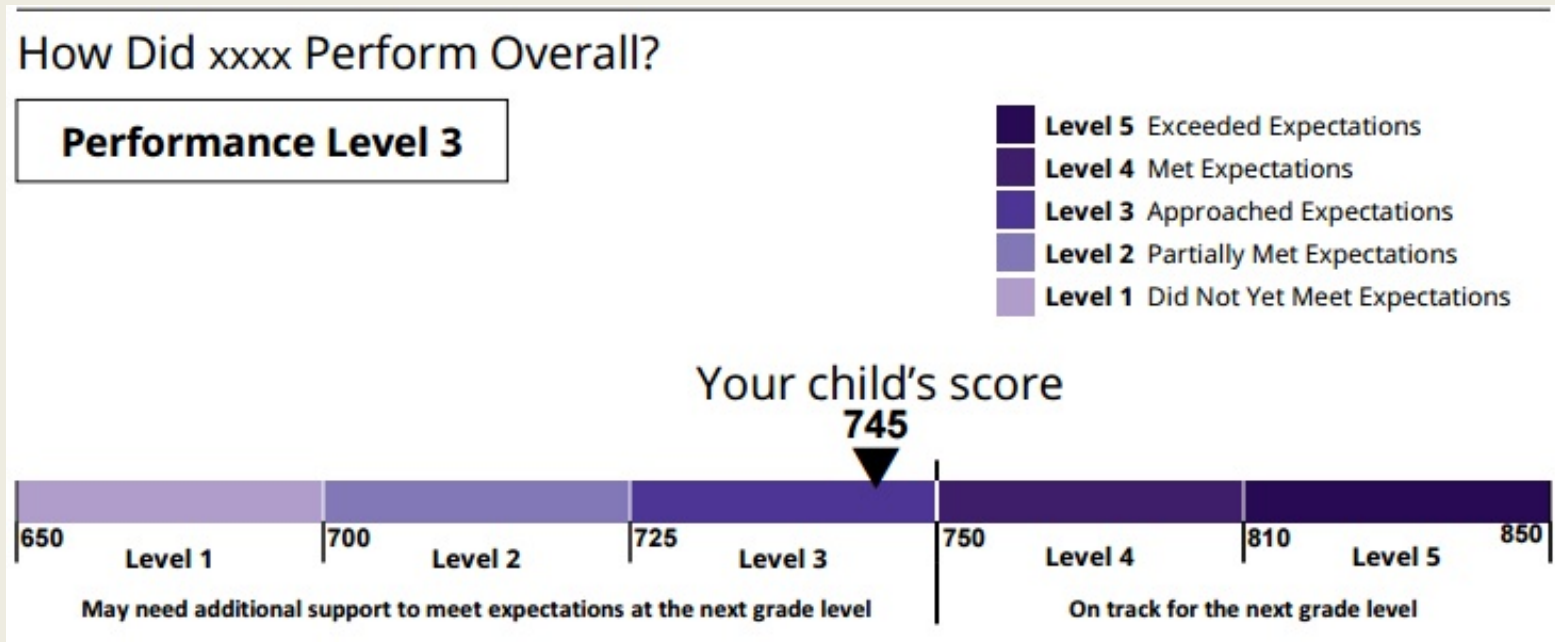


2013 - 2016
West Orange and State Results
NJBCT (Biology)



RESOURCES FOR PARENTS

- Information on the new 2015-16 PARCC Student Reports: www.state.nj.us/education/assessment/parcc/scores/
- Understanding the student score reports (with translations): understandthescore.org/



Sample report

THANK YOU