

**New Jersey Department of Education (NJDOE)  
School Performance Reports**

**West Orange Public Schools Presentation  
Spring 2020**

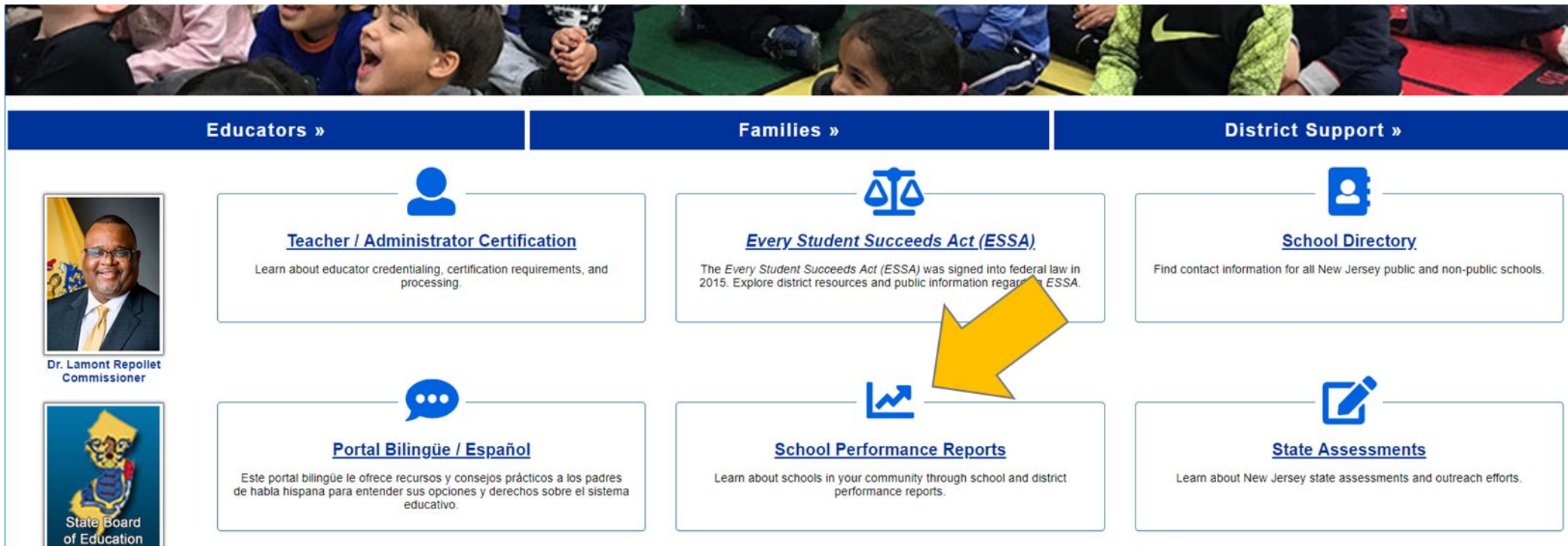


# 2018-19 School Performance Reports









- The **School Performance Reports** reflect the New Jersey Department of Education's commitment to providing parents, students, and school communities with a large variety of information about each school and district. These reports can be used as a tool to help evaluate whether all students have equitable access to high quality education.
- Communities are encouraged to use these reports to **learn more, start conversations, and engage.**
- In addition to meeting the federal report requirements under *ESSA*, NJDOE is committed to developing reports that **provide stakeholders with a broader picture of their schools and districts.**
- Along with the **detailed School Performance Reports** for each school, district, and state, **one-page Summary Reports** for each school and district are also available. The Summary Reports provide a high-level summary of how well a school or district is performing.
- The reports and resources are also translated into Spanish.

# Where Can You Find the Performance Reports?

You can find the performance reports on the New Jersey Department of Education homepage, [www.nj.gov/education](http://www.nj.gov/education). Use the “School Performance Reports” link in the center of the page.



The image shows a screenshot of the New Jersey Department of Education homepage navigation menu. At the top, there is a blue header with three main categories: "Educators »", "Families »", and "District Support »". Below this header, there are six white boxes with blue borders, each containing an icon, a title, and a brief description. A large yellow arrow points to the "School Performance Reports" box. On the left side of the page, there are two vertical images: a portrait of Dr. Lamont Repollet, Commissioner, and the logo of the State Board of Education.

	Educators »	Families »	District Support »
 Dr. Lamont Repollet Commissioner	 <b><u>Teacher / Administrator Certification</u></b> Learn about educator credentialing, certification requirements, and processing.	 <b><u>Every Student Succeeds Act (ESSA)</u></b> The <i>Every Student Succeeds Act (ESSA)</i> was signed into federal law in 2015. Explore district resources and public information regarding ESSA.	 <b><u>School Directory</u></b> Find contact information for all New Jersey public and non-public schools.
 State Board of Education	 <b><u>Portal Bilingüe / Español</u></b> Este portal bilingüe le ofrece recursos y consejos prácticos a los padres de habla hispana para entender sus opciones y derechos sobre el sistema educativo.	 <b><u>School Performance Reports</u></b> Learn about schools in your community through school and district performance reports.	 <b><u>State Assessments</u></b> Learn about New Jersey state assessments and outreach efforts.

# School Performance Reports Homepage

You can also go directly to the School Performance Reports homepage, [www.njschooldata.org](http://www.njschooldata.org).



- Performance Reports Home Page
- Resource Documents
- Reference Guide
- Summary Report Guide
- Frequently Asked Questions
- Videos and Other Resources
- Data Privacy Rules (FERPA)
- Take our Feedback Survey
- Download the Data

## New Jersey School Performance Reports

The School Performance Reports reflect the NJDOE's extensive efforts to engage with parents, students, and school communities and share the information that is most valuable in providing a picture of overall school performance. Communities are encouraged to use these reports to learn more, start conversations, and engage.

Search for a school or district below to get started.

Select School Year:  [View report data prior to 2011-2012](#)

Select Report Type:  School  District  State

Select Search Type:  School/District/County Dropdown  School Name  Zip Code

County:

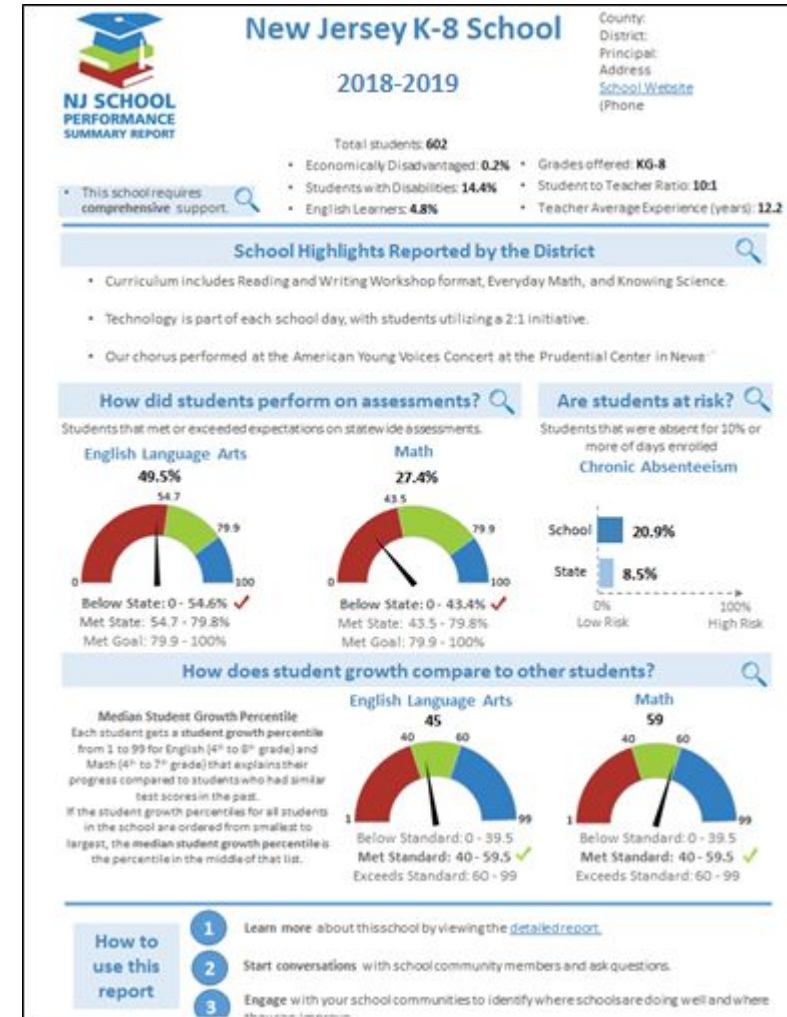
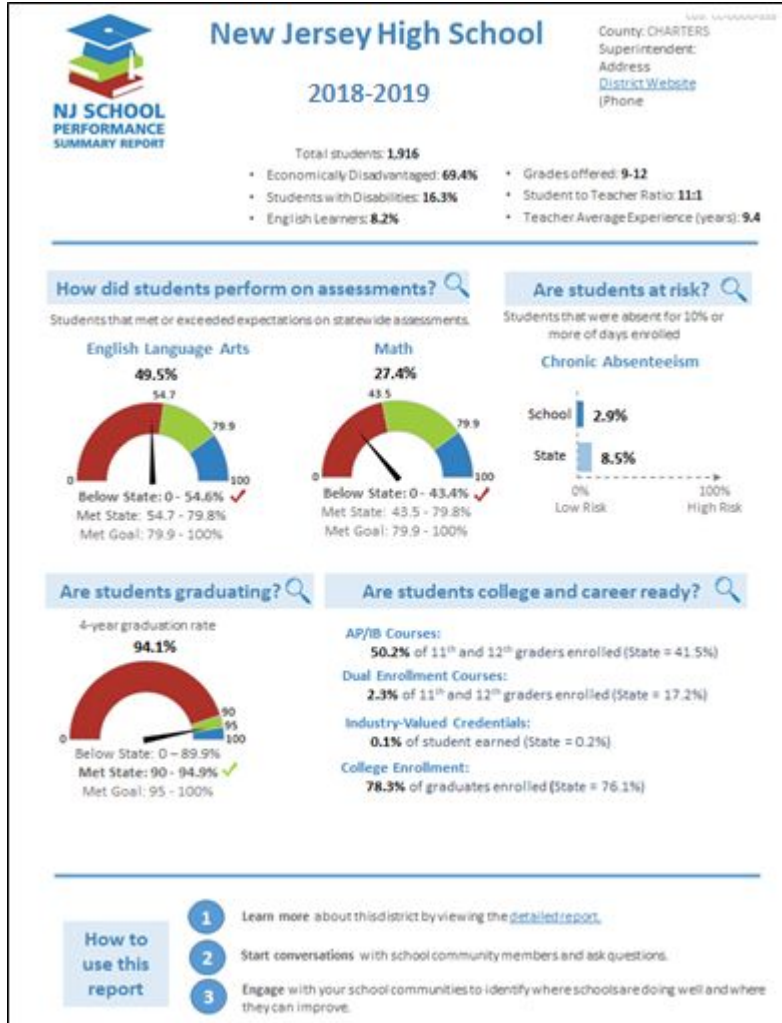
District:

School:

Search for Reports

[View an alphabetical list of all schools](#)

# Summary Performance Reports



# What Kinds of Information Do the School Performance Reports Include?

The New Jersey School Performance Reports contain hundreds of data points about schools and districts across New Jersey including:

- ✓ School and district overviews
- ✓ Demographic information
- ✓ Student growth
- ✓ Academic achievement
- ✓ College and career readiness
- ✓ Graduation and postsecondary information
- ✓ School climate and environment
- ✓ Staff information
- ✓ School Accountability
- ✓ School and district narrative information

# New Data Added to the Full Reports

NJDOE added several new data elements to the 2018-19 School Performance Reports based on requests received during stakeholder engagement, federal reporting requirements, and the goal of promoting equity and progress:

- Participation in Computer Science and Information Technology courses
- School-level per-pupil expenditures
- Additional student group data for student growth, chronic absenteeism, graduation rates, and career and technical education program participation
- Three-year progress data for student growth, proficiency, and graduation rates

# Progress on Accountability Indicators: West Orange District 2016-17 to 2018-19

Data Measure	2016-17	2017-18	2018-19
ELA Proficiency	59.5%	61.4%	59.4%
Math Proficiency	44.4%	47.8%	43.1%
ELA Growth	52	46	50
Math Growth	45	48	46
4-Year Graduation Rate	86.7%	91.2%	90.3%
5-Year Graduation Rate	89.1%	90.9%	93.0%
Progress toward English Language Proficiency	N/A	67.1%	59.9%
Chronic Absenteeism	7.9%	8.3%	10.1%

This table shows 2018-2019 graduation data for reference, but 2017-2018 graduation data is used for accountability calculations for 2018-2019.

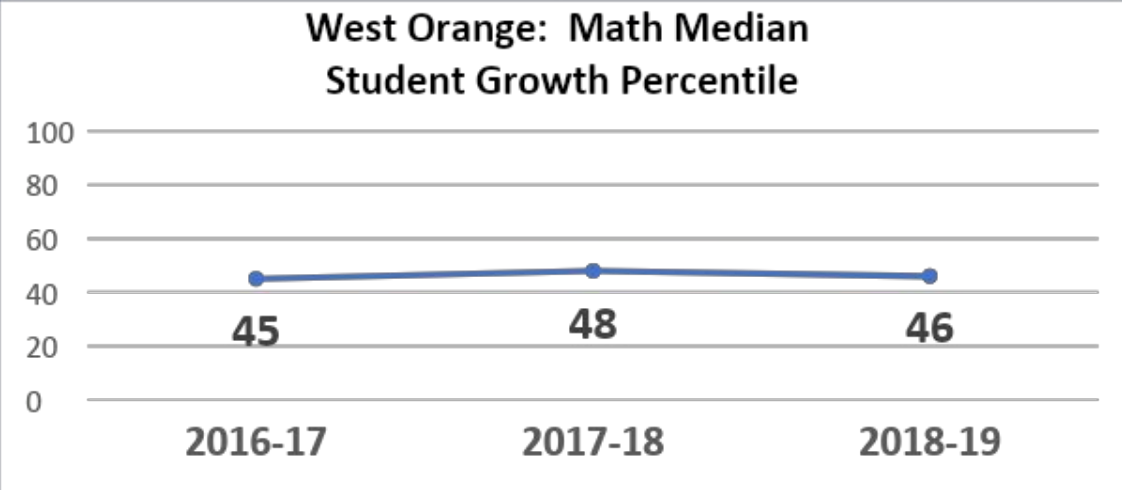
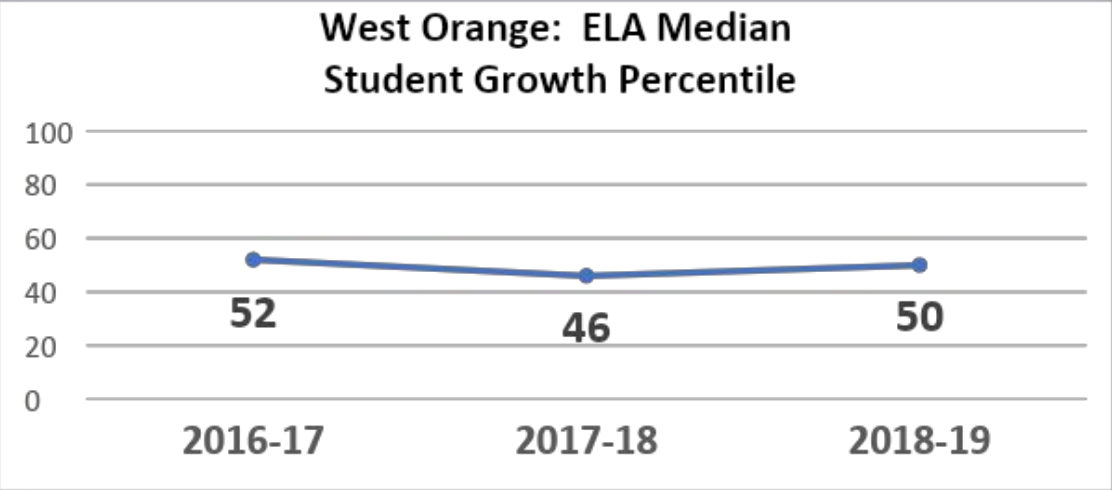


# West Orange District: Student Growth (1 of 2)

Each student gets a **student growth percentile (SGP)** from 1 to 99 for English (4<sup>th</sup> to 8<sup>th</sup> grade) and Mathematics (4<sup>th</sup> to 7<sup>th</sup> grade) that explains their progress compared to students who had similar test scores in the past (“academic peers”). An SGP between 35 and 65 is considered “typical”.

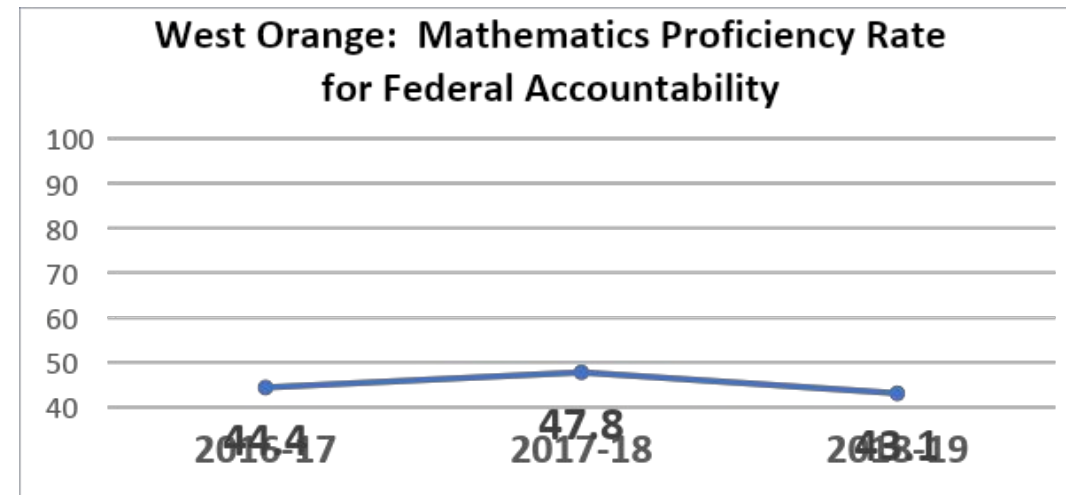
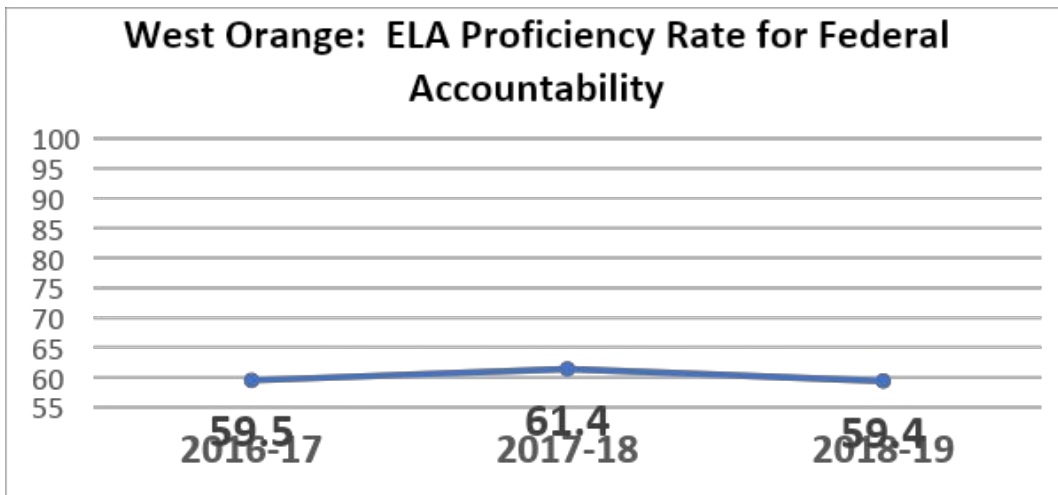
If the student growth percentiles for all students in a group (for example a school, a district, a student group, or a grade level), are ordered from smallest to largest, the **median student growth percentile (mSGP)** for that group is the percentile in the middle of the list. NJDOE’s standard for school and district accountability purposes is an mSGP of at least 40.

# West Orange District: Student Growth (2 of 2)



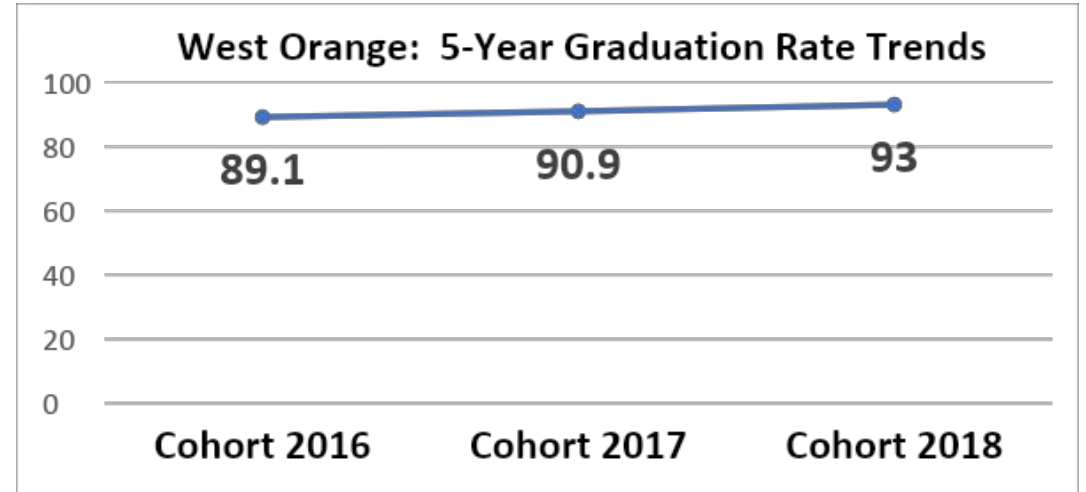
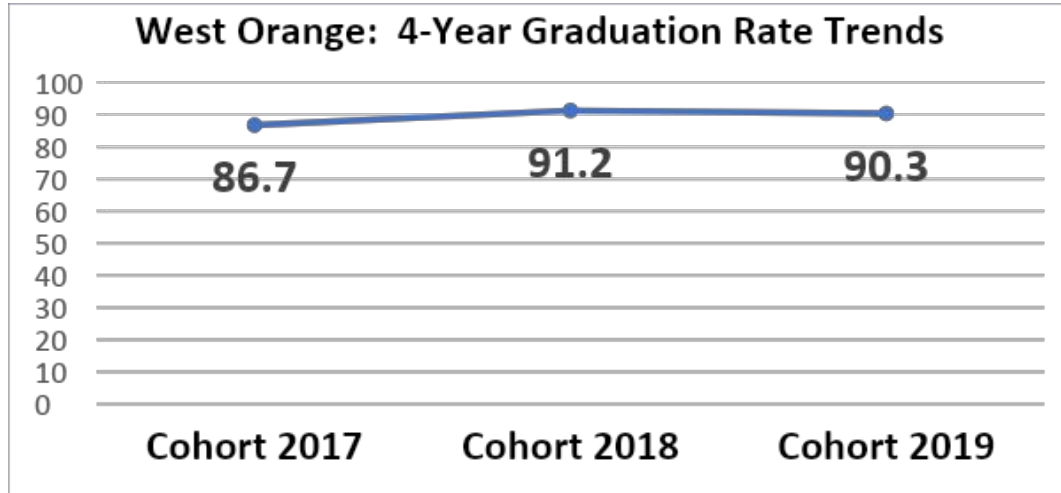
Performance	ELA 2016-17	ELA 2017-18	ELA 2018-19	Math 2016-17	Math 2017-18	Math 2018-19
West Orange Median Student Growth Percentile	52	46	50	45	48	46
Statewide Median Student Growth Percentile	50	50	50	50	50	50

# West Orange District: Assessment Proficiency & Participation



Performance	ELA 2016-17	ELA 2017-18	ELA 2018-19	Math 2016-17	Math 2017-18	Math 2018-19
<b>West Orange Participation</b>	<b>91.1%</b>	<b>95.6%</b>	<b>95.1%</b>	<b>90.4%</b>	<b>94.9%</b>	<b>95.0%</b>
<b>West Orange Proficiency</b>	<b>59.5%</b>	<b>61.4%</b>	<b>59.4%</b>	<b>44.4%</b>	<b>47.8%</b>	<b>43.1%</b>
<b>Statewide Proficiency</b>	<b>54.9%</b>	<b>56.7%</b>	<b>57.9%</b>	<b>43.5%</b>	<b>45.0%</b>	<b>44.5%</b>

# Graduation Rates



Performance	Cohort 2017 4-Year Rate	Cohort 2018 4-Year Rate	Cohort 2019 4-Year Rate	Cohort 2016 5-Year Rate	Cohort 2017 5-Year Rate	Cohort 2018 5-Year Rate
West Orange	86.7%	91.2%	90.3%	89.1%	90.9%	93.0%
State	90.5%	90.9%	90.6%	91.8%	92.4%	92.5%

# Graduation Pathways

What assessment did students use in order to meet their graduation assessment requirement?  
 New information in the reports shows how our students are qualifying for graduation.

<b>Subject</b>	<b>Pathways for Class of 2019</b>	<b>West Orange</b>	<b>State</b>
ELA	Statewide Assessment	<b>34.6%</b>	<b>62.8</b>
ELA	Substitute Competency Assessment	<b>49.8%</b>	<b>25.9%</b>
ELA	Portfolio Appeals	<b>10.2%</b>	<b>5.6%</b>
ELA	Alternate Requirements specified in IEP	<b>5.5%</b>	<b>5.6%</b>
Math	Statewide Assessment	<b>26.4%</b>	<b>56.5%</b>
Math	Substitute Competency Assessment	<b>54.3%</b>	<b>29.3%</b>
Math	Portfolio Appeals	<b>12.4%</b>	<b>7.2%</b>
Math	Alternate Requirements specified in IEP	<b>6.9%</b>	<b>6.8%</b>

# Progress Toward English Language Proficiency (1 of 2)

One of the more significant changes under federal law *ESSA* is that it elevated attention to English Learners (ELs) by adding a measure of English language proficiency (ELP) into the overall school accountability system. Now, all schools are accountable for ensuring ELs make progress toward ELP.

**Percentage of English Learners**

District	State
4.2%	7.0%

School	%
WOHS	3.3%
Liberty	2.1%
Roosevelt	2.2%
Edison	3.0%

**Progress Toward English Language Proficiency**

District	State
59.9%	43.7%

School	%
WOHS	58.3%
Liberty	N/A
Roosevelt	N/A
Edison	N/A

# Progress Toward English Language Proficiency (2 of 2)

Percentage of English Learners

District	State
4.2%	7.0%

School	%
Gregory	5.7%
Hazel	7.7%
Kelly	7.9%
Mt. Pleasant	5.2%
Redwood	3.9%
St. Cloud	1.6%
Washington	9.0%

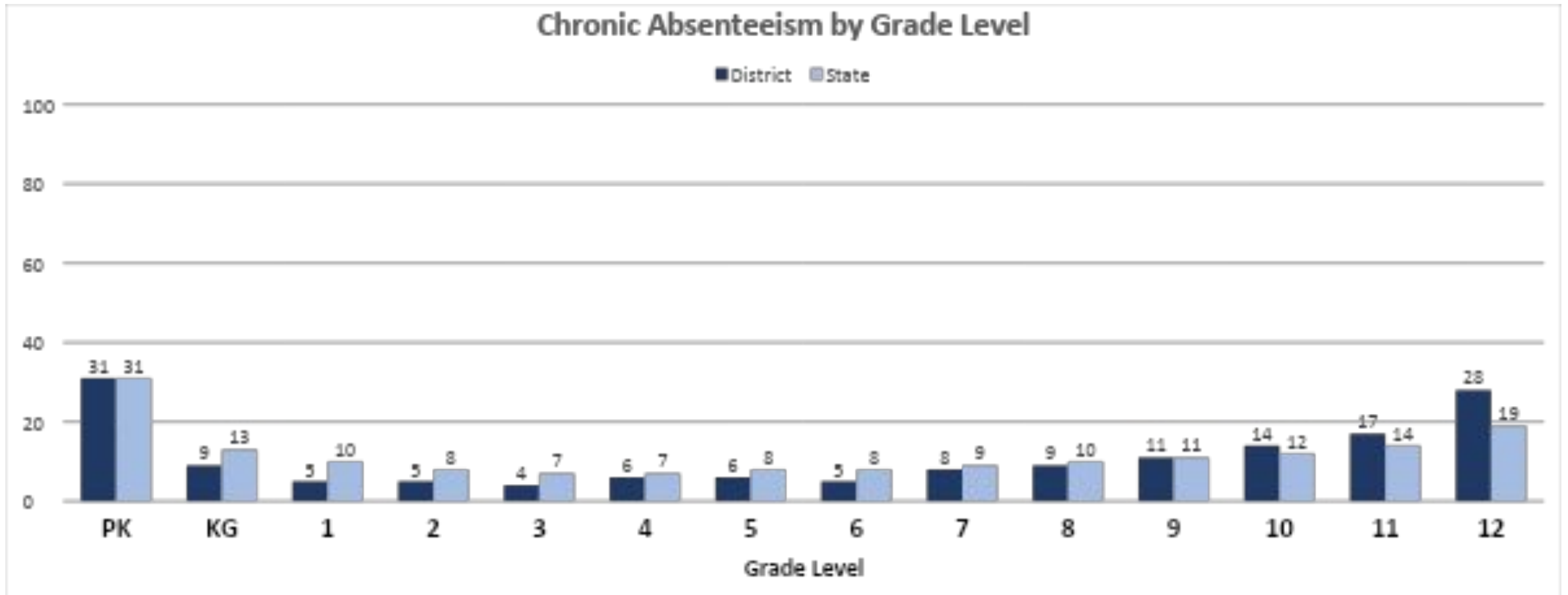
Progress Toward English Language Proficiency

District	State
59.9%	43.7%

School	%
Gregory	73.7%
Hazel	57.1%
Kelly	52.4%
Mt. Pleasant	40.0%
Redwood	72.2%
St. Cloud	N/A
Washington	68.4%

# Chronic Absenteeism

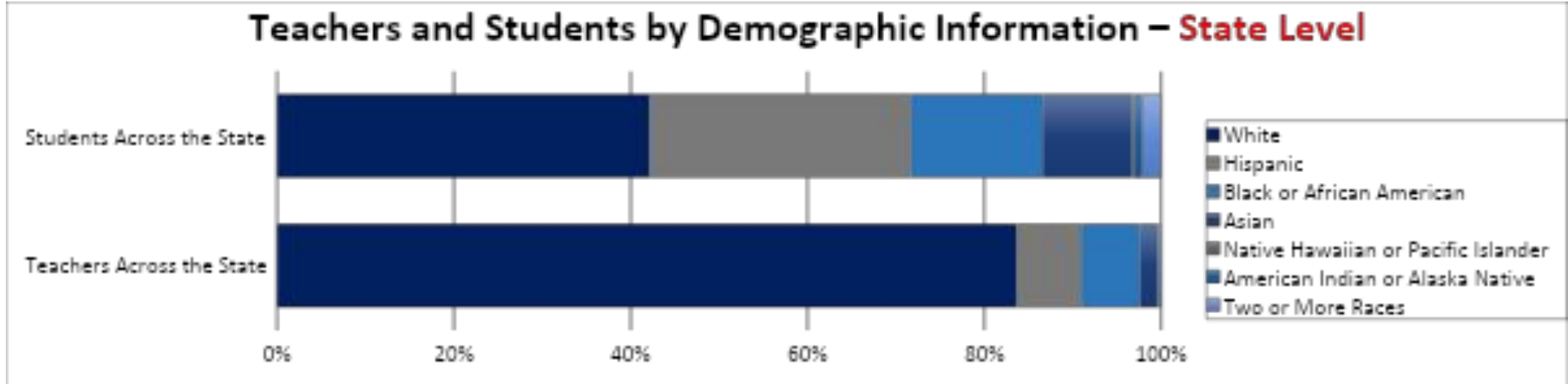
Student absences provide important information about a school's culture and climate. Research shows that absences impact a student's ability to succeed in school. Chronic absenteeism is defined as being absent for 10% or more of the days enrolled during the school year. A student who is not present for any reason, whether excused, unexcused, or for disciplinary action, is considered absent unless permitted by state statute or regulations.





# Teacher Demographic Information (1 of 2)

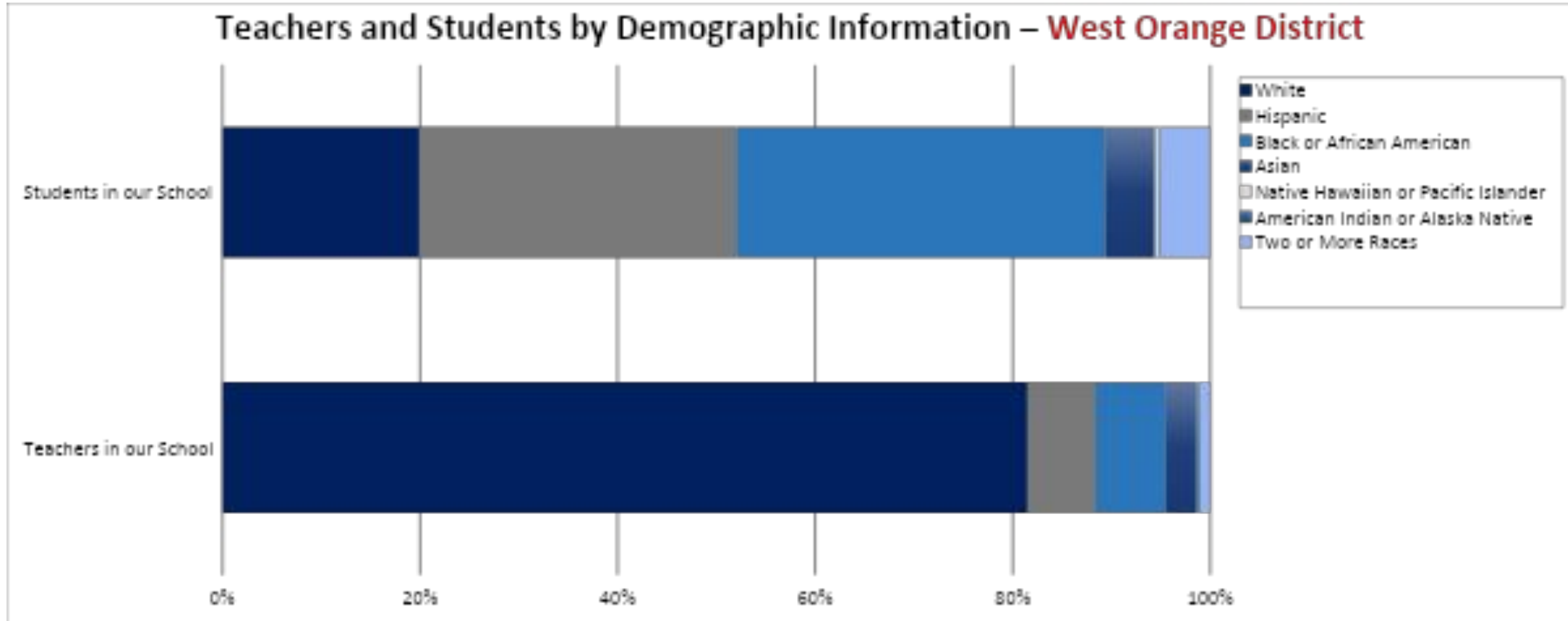
Do the students in our classrooms have the opportunity to be led by diverse teachers?  
Teacher diversity improves outcomes for all students.



Race	Teachers Across the State	Students Across the State
White	83.6%	42.4%
Hispanic	7.3%	29.9%
Black or African American	6.6%	15.0%
Asian	2.0%	10.2%
Native Hawaiian or Pacific Islander	0.1%	0.2%
American Indian or Alaska Native	0.1%	0.1%
Two or More Races	0.2%	2.1%

# Teacher Demographic Information (2 of 2)

Do the students in our classrooms have the opportunity to be led by diverse teachers?  
Teacher diversity improves outcomes for all students.



# College and Career Readiness (1 of 2)

The College and Career Readiness section of the reports shows information about college entrance exams, advanced coursework, career and technical education (CTE) programs, and participation in coursework across subject areas.

<b>College and Career Readiness Measures</b>	<b>District</b>	<b>State</b>
<b>% of 12<sup>th</sup> graders that took SAT in high school</b>	77.9%	72.1%
<b>% of 12<sup>th</sup> graders that took ACT in high school</b>	25.4%	19.6%
<b>% of 11<sup>th</sup> and 12<sup>th</sup> graders enrolled in one or more Advanced Placement (AP) or International Baccalaureate (IB) course</b>	29.5%	35.2%
<b>% of 11<sup>th</sup> and 12<sup>th</sup> graders enrolled in dual enrollment coursework</b>	19.5%	19.0%
<b>% CTE concentrators</b>	19.8%	10.3%
<b>% of students earning industry-valued credentials</b>	0.0%	0.9%
<b>Number of students earning a Seal of Biliteracy</b>	29	5,468

# College and Career Readiness (2 of 2)

The College and Career Readiness section includes participation in visual and performing arts coursework for students in grades 6 through 12.

**97.1%** of students in grades 6 through 8 enrolled in an arts course (State = 90.9%)

- **51.8%** enrolled in Music courses (State = 65.1%)
- **0.0%** enrolled in Dance courses (State = 2.2%)
- **0.0%** enrolled in Drama courses (State = 7.1%)
- **46.9%** enrolled in Visual Arts courses (State = 70.0%)

**66.0%** of students in grades 9 through 12 enrolled in an arts course (State = 50.9%)

- **24.4%** enrolled in Music courses (State = 17.6%)
- **4.6%** enrolled in Dance courses (State = 2.3%)
- **4.5%** enrolled in Drama courses (State = 3.9%)
- **42.0%** enrolled in Visual Arts courses (State = 32.9%)

# How is a Specific Student Group Performing in Our District?

## Spotlight on Economically Disadvantaged (ED) Students

Metric	ED Students: District	Total: District	ED Students: State	Total: State
Percentage of population	40.5%		37.2%	
ELA Performance on State Assessment	46.5%	59.4%	40.0%	57.9
Math Performance on State Assessment	29.1%	43.1%	26.3	44.5
Student Growth in ELA (mSGP)	47	50	48	50
Student Growth in Math (mSGP)	44	46	46	50
Graduation Rate (Cohort 2019 4-year)	88.3%	90.3%	84.0%	90.6%
Graduation Rate (Cohort 2018 5-year)	91.8%	93.0%	87.3%	92.5%
Post-secondary enrollment (16 month)	78.2%	79.2%	65.9%	77.6%
Chronic Absenteeism Rate	11.2%	10.1%	16.0%	10.6%

# Student Safety in the District

## Narrative Information on Student Safety

- This table shows the number of incidents reported by type.
- A single incident may be counted under multiple incident types.
- The total unique incidents row provides an unduplicated count of incidents.
- The last row shows the rate of incidents for every 100 students enrolled.

## Violence, Vandalism, HIB, and Substance Offenses

Incident Type	Number of Incidents: District	Number of Incidents: State
Violence	41	12,381
Vandalism	4	1,770
Weapons	6	924
Substances	33	6,234
Harassment, Intimidation, Bullying (HIB)	43	7,183
Total Unique Incidents	125	28,121
Incidents Per 100 Students Enrolled	1.89	2.00

# Early Childhood Education in the District

## Narrative Information on Early Childhood Education

This table shows number of students in full day and half day Pre-Kindergarten (PK) and Kindergarten (KG) for the past three school years.

## Enrollment Trends by Full/Half Day PK and KG in our District

Type of Pre-K	2016-2017	2017-2018	2018-2019
PK - Half Day	89	71	78
PK - Full Day	2	29	9
KG - Half Day	0	0	0
KG - Full Day	473	478	467

# Student Supports and Services

## Narrative Information on Student Supports and Services

This table shows ratios of students and staff members in the district.

## Student and Staff Ratios

Category	District
Students to Teachers	<b>10:1</b>
Students to Administrators	<b>147:1</b>
Teachers to Administrators	<b>14:1</b>
Students to Librarian/Media Specialists	<b>510:1</b>
Students to Nurses	<b>510:1</b>
Students to Counselors	<b>276:1</b>
Students to Child Study Team	<b>201:1</b>



# Postsecondary Enrollment

## Postsecondary Information from Narrative

This table shows information about Class of 2018 high school graduates enrolled in postsecondary institutions by the fall 2019.

## Postsecondary Enrollment Rates: 16-month

Student Group	District	State
Total Population	79.2%	77.6%
White	85.1%	83.0%
Hispanic	68.8%	66.7%
Black or African American	82.4%	67.1%
Asian, Native Hawaiian, or Pacific Islander	85.7%	91.7%
American Indian or Alaska Native	*	77.4%
Two or More Races	*	76.9%

- Data is not displayed in order to protect student privacy; indicates that data was available for too few students to report the given information.

# Have Feedback or Questions?

- **Additional resources** are available at: [www.njschooldata.org](http://www.njschooldata.org)
- **Visit** our district website for updates: [woboe.org](http://woboe.org)
- Take the NJDOE School Performance Reports **feedback survey**:  
<https://www.surveymonkey.com/r/201819SPR>
- **Visit** the NJDOE website at: [www.nj.gov/education](http://www.nj.gov/education)
- **Email** the NJDOE: [reportcard@doe.nj.gov](mailto:reportcard@doe.nj.gov)